



150 Dodd Street SE  
Marietta, GA. 30060

**Phone:** 770-973-6251  
**Fax:** 678-401-3854  
**Cage Code:** 7JZZ8

**Email:** [info@mgs4u.com](mailto:info@mgs4u.com)  
**Website:** [www.mgs4u.com](http://www.mgs4u.com)

RP-SMA male Crimp On for RG-174, RG-188, RG-188A/U, RG-316, RG-316/U Double Shield, LMR-100A, Belden 7805R, Belden 8216, Belden 83269, Belden 83284, Belden 84316, and other 0.100 Inch OD Coaxial cable



### Technical Data Sheet

This RP-SMA Male Crimp Connector is one of several thousand RF products available from Max-Gain Systems, Inc. This connector has a crimp on interface with the coax selected.

This connector is made from a Solid Brass body that is precision machined and plated with Gold for superior performance and value. This RP-SMA Male Crimp Connector has a PTFE dielectric and a gold plated brass center pin. The RP-SMA Male interface provides the same threads as an SMA male and pins that are normally found in SMA female connections; RP-SMA connections are popular in Wi-Fi, WiMAX, and other computer applications. This RF connector fits (but not limited to) RG-174, RG-188, RG-188A/U, RG-316, RG-316/U Double Shield, LMR-100A, Belden 7805R, Belden 8216, Belden 83269, Belden 83284, Belden 84316, and other 0.100 Inch OD Coaxial cable.

### Material Specifications

**RP-SMA male Crimp Connector for 0.100 Inch OD Coax      Part Number 8895-RPSMA-174**

Description	Material	Plating
Ferrule	Brass	Gold
Pin	Phosphor Bronze	Gold
Insulator	PTFE	White
Body	Brass	Gold

## Electrical Specifications

Criteria	Dimension
Impedance (Nominal)	<b>50 Ohms</b>
Frequency Range	<b>DC to 12.4 GHz</b>
Working Voltage	<b>350</b>

## Mechanical Specifications

Size	Dimension
Length	<b>0.62 in (16 mm)</b>
Width	<b>0.32 in (8 mm)</b>
Height	<b>0.32 in (8 mm)</b>
Weight	<b>0.05 oz (1 g)</b>

## Environmental Specifications

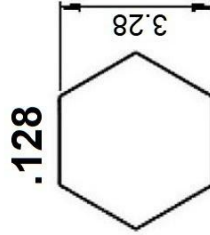
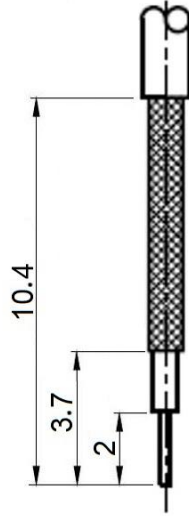
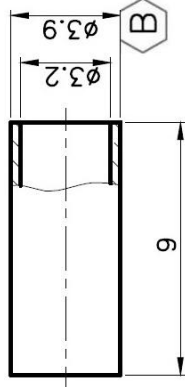
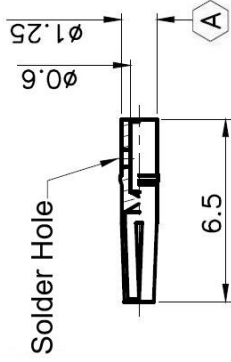
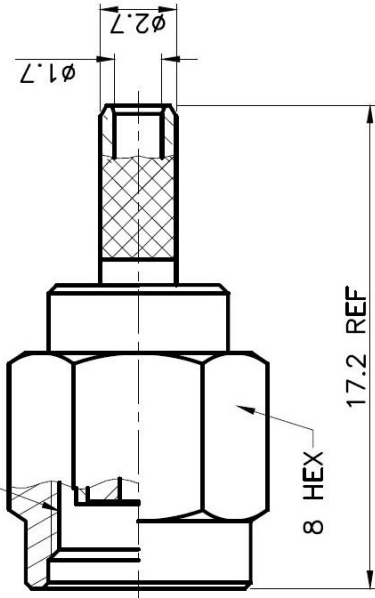
Temperature	Spec
Operating Range	<b>-65 to +165 deg C</b>

## Compliance Certifications (see product page for current documentation)

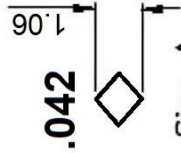
**Availability** Click the following link (or enter part number in the “SEARCH” bar at the top of any page of the website) to obtain additional part information including price, inventory and certifications: <https://mgs4u.com/product/rp-sma-male-crimp-connector-for-0-100-inch-od-coax-8895-rpsma-174/>

Impedance	50 Ohms
Frequency Range	DC to 12.4 GHz
VSWR	1.21:1
Working Voltage	350

1/4-36UNS-2B



Die Size B



Die Size A

\*Solder Connection Preferred

RECOMMENDED  
CABLE STRIPPING DIM'S

**MGS** MAX-GAIN SYSTEMS, INC.

Max-Gain Systems, Inc.  
150 Dodd Street SE, Marietta, GA, 30060  
Phone: (770) 973-6251 | Fax: (678) 401-3854  
Website: www.mgs4u.com | E-Mail: sales@mgs4u.com

TITLE: RP-SMA male Crimp Connector for RG-174,  
RG-316, and LMR-100A Coax

DRAWING NO: 8895-RPSMA-174  
CAGE CODE: 7JZZ8

		PART NO	DATE
		APPROVED	DATE
		CHECKED	DATE
		DRAWN	DATE
		UNLESS OTHERWISE SPECIFIED TOLERANCES	
		0.5-5 = ±0.2	
		5-30 = ±0.4	
		30-120 = ±0.6	
		120-315 = ±1	
		315-1000 = ±1.6	
		1000-2000 = ±2.4	
		UNIT: mm	
		SCALE: .	
FERRULE	BRASS	GOLD	1
PIN	PHOSPHOR BRONZE	GOLD	1
SHELL	BRASS	GOLD	1
C RING	STEEL	NONE	1
GASKET	RUBBER	RED	1
INSULATOR	TEFLON	WHITE	1
BODY	BRASS	GOLD	1
NO. DESCRIPTION	MATERIAL	FINISH	QTY

## Installation Guide

We will begin by installing the RP-SMA crimp-on connector on a piece of coax. This process is the same for all the types of coaxial cable that fit this RP-SMA crimp-on connector. These connectors fit on a wide range of coax types, including: RG-174, RG-188, RG-188A/U, RG-316, RG-316/U Double Shield, LMR-100A, Belden 7805R, Belden 8216, Belden 83269, Belden 83284, Belden 84316, and other 0.100 Inch OD Coaxial cable.

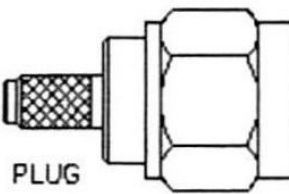
### Identify all connector parts (3 Parts):

Each connector consists of one body assembly (plug), one rear ferrule (crimp sleeve), and one center pin (plug contact).

#### STEP 1

CRIMP SLEEVE

PLUG CONTACT



PLUG



### Coax Stripping:

First cut your coaxial cable to the desired length and then strip the black jacket back approximately 10.4mm (0.41"). When the jacket is stripped back the braid can then be stripped back 3.7mm (0.145") from the fresh end down to the center conductor. The dielectric then is stripped back only 2mm (0.8") from the fresh end down to the center conductor.

Once the cable is prepped, make sure to put the ferrule (crimp sleeve) of the connector on the coaxial cable before you proceed.

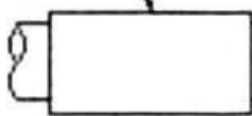
#### STEP 2

CRIMP SLEEVE

JACKET

BRAID

CENTER CONDUCTOR



.41 (10.4)

.145 (3.7)

.08 (2)

## Crimping and Soldering Install:

Place the center pin onto the conductor of the coaxial cable.

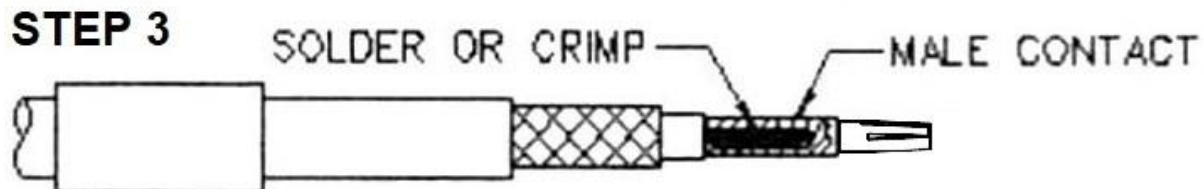
### Soldering Guide (preferred):

*This soldering guide is for soldering Max-Gain Systems, Inc. RP-SMA crimp-on connectors. These are approximate measurements for our RP-SMA crimp-on connectors, which adhere to industry standards for this type connector. If you choose to use this guide for connectors sold by others who do NOT adhere to these standards, the measurements could be off and result in a poor installation.*

### Now we begin soldering the center pin onto the center conductor of the coax.

Begin by applying heat to the center pin of the RP-SMA connector with your soldering iron. Before proceeding, allow sufficient time for the soldering iron tip to reach full operating temperature and clean the tip of the iron by wiping it with a damp sponge. Place the soldering iron UNDER the center pin and, with the solder hole of the center pin facing up, apply the solder into the hole. The heat rises and heats up the pin faster. When the pin is heated the solder will start to flow into the pin. Allow sufficient solder to flow into the center pin to make a good connection, but not too much that it begins to leak out and potential start to melt the dielectric of the coax.

### Crimping Guide:

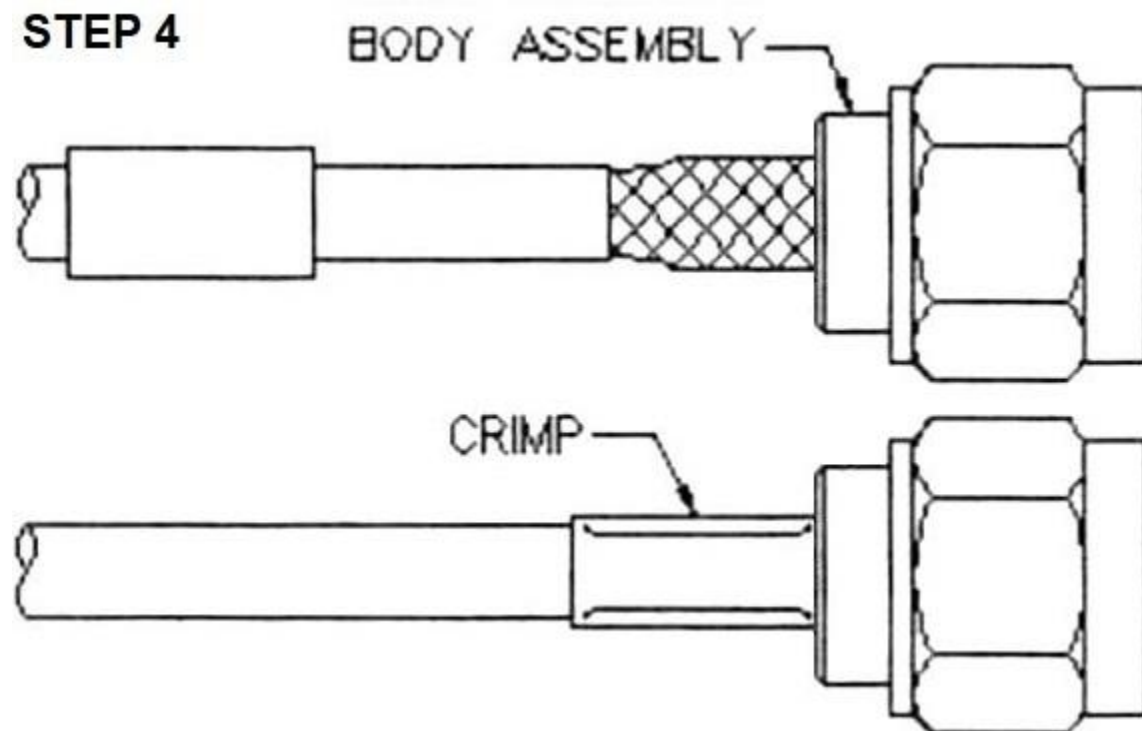


The center pin is crimpable by using the 0.042" hex die from your 7505-DIE-174 ratcheting crimper die to crimp the smaller tapered portion of the center pin. This crimp die is available by itself or as a kit with a ratcheting crimp handle.

DIE Only	Die and Tool Kit
P/N: 7505-DIE-174	P/N: 7505-HANDLE-174
	

### **Crimping The Ferrule:**

Slide the ferrule (placed on the coax at the beginning of Step 2) over the braid and completely up against the connector body. Using the 0.128" hex die from the 7505-DIE-174 installed into the 7505-HANDLE ratcheting crimp handle, crimp the ferrule at the location shown in the picture below (on the ferrule, but right up against the main body of the connector).



### **Final Testing:**

When this is completed, as a final test, you should always check resistance from the center pin to the body with an ohmmeter in a low resistance scale. After verifying that there are no braid – to – center pin shorts on the other end of the coaxial cable, you should see infinite resistance (open). This completes your RP-SMA male crimp-on connector installation, and the connector is ready for use!