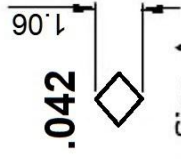
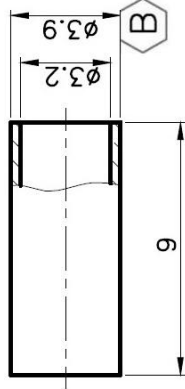
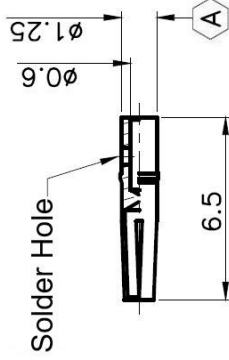
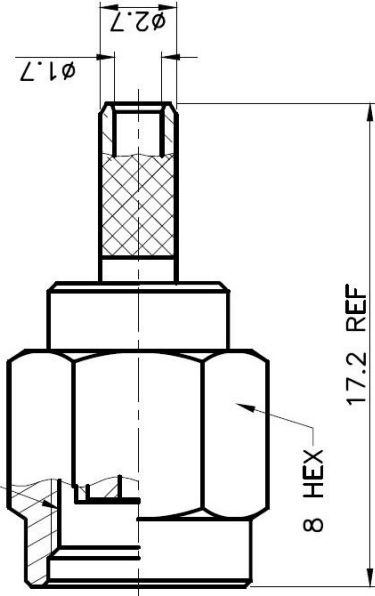
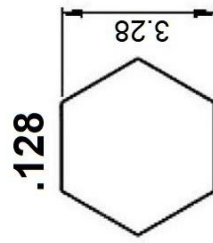


Impedance	50 Ohms
Frequency Range	DC to 12.4 GHz
VSWR	1.21:1
Working Voltage	350

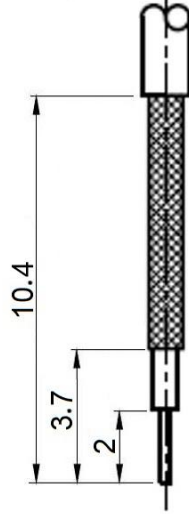
1/4-36UNS-2B



Die Size A
*Solder Connection Preferred



Die Size B



RECOMMENDED
CABLE STRIPPING DIM'S



Max-Gain Systems, Inc.
150 Dodd Street SE, Marietta, GA, 30060
Phone: (770) 973-6251 | Fax: (678) 401-3854
Website: www.mgs4u.com | E-Mail: sales@mgs4u.com

TITLE: RP-SMA male Crimp Connector for RG-174,
RG-316, and LMR-100A Coax

DRAWING NO: 8895-RPSMA-174
CAGE CODE: 7JZZ8

		PART NO	DATE
		APPROVED	DATE
		CHECKED	DATE
		DRAWN	DATE
		UNLESS OTHERWISE SPECIFIED TOLERANCES	
		0.5-5 = ±0.2	
		5-30 = ±0.4	
		30-120 = ±0.6	
		120-315 = ±1	
		315-1000 = ±1.6	
		1000-2000 = ±2.4	
		UNIT: mm	
		SCALE: .	
FERRULE	BRASS	GOLD	
PIN	PHOSPHOR BRONZE	GOLD	
SHELL	BRASS	GOLD	
C RING	STEEL	NONE	1
GASKET	RUBBER	RED	1
INSULATOR	TEFLON	WHITE	1
BODY	BRASS	GOLD	1
NO. DESCRIPTION	MATERIAL	FINISH	QTY