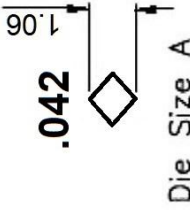
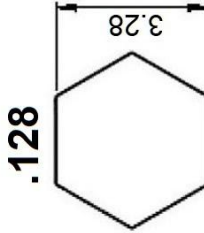
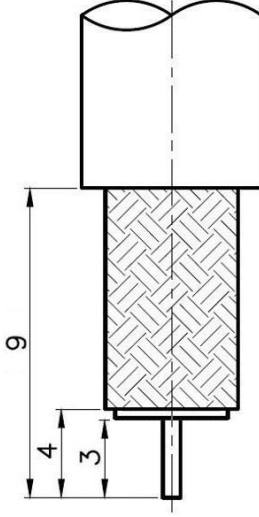
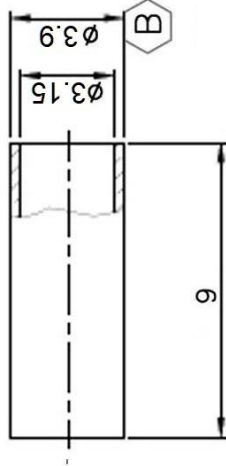
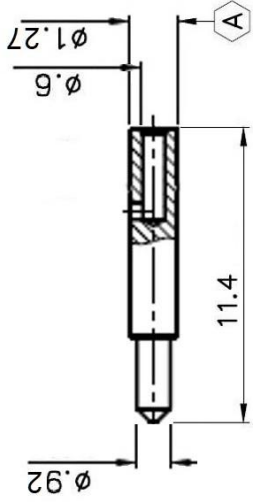
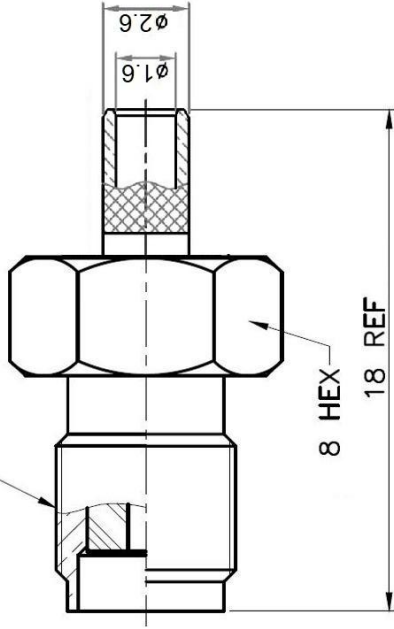


Impedance	50 Ohms
Frequency Range	DC to 12.4 GHz
VSWR	1.21:1
Working Voltage	350

1/4-36UNS-2A



.042

RECOMMENDED  
CABLE STRIPPING DIM'S



Max-Gain Systems, Inc.  
150 Dodd Street SE, Marietta, GA. 30060  
Phone: (770) 973-6251 | Fax: (678) 401-3854  
Website: www.mgs4u.com | E-Mail: sales@mgs4u.com

TITLE: RP-SMA male Crimp Connector for RG-174,  
RG-316, and LMR-100A Coax

DRAWING NO: 8896-RPSMA-174  
CAGE CODE: 7JZZ8

PART NO	DATE	UNLESS OTHERWISE SPECIFIED TOLERANCES	QTY
APPROVED	DATE	0.5-5 ±0.2	
CHECKED	DATE	5-30 ±0.4	
DRAWN	DATE	30-120 ±0.6	
		120-315 ±1	
		315-1000 ±1.6	
		1000-2000 ±2.4	
		UNIT: mm	
		SCALE: -	
FERRULE		GOLD	1
PIN		PHOSPHOR BRONZE	1
INSULATOR		TEFLON	1
BODY		BRASS	1
NO. DESCRIPTION		MATERIAL	FINISH