



150 Dodd Street SE
Marietta, GA. 30060

Phone: 770-973-6251
Fax: 678-401-3854

Email: info@mgs4u.com
Website: www.mgs4u.com

Type N male to Type F female Adapter



Technical Data Sheet

This Type N male to Type F female adapter is one of several thousand RF products available from Max-Gain Systems, Inc. This adapter is a between series coaxial adapter.

This adapter is made from a Solid Brass body that is precision machined and plated with Nickel for superior performance and value. This Type N male to Type F female adapter has a delrin dielectric and a gold plated brass center pin. The Type N male side contains a gasket, for shock / vibration resistant and waterproof connections. The Type F female side provides threads that ensure a perfect connection allowing use at higher frequencies.

Material Specifications

Type N male to Type F female Adapter

Part Number 7325

Description	Material	Plating
Shell	Brass	Nickel
C Ring	Brass	None
Gasket	Rubber	Red
Pin	Brass	Gold
Insulator	Delrin	White
Body	Brass	Nickel

Mechanical Specifications

Size	Dimension
Length	1.27 in (32.3 mm)
Width	0.78 in (20 mm)
Height	0.78 in (20 mm)
Weight	1.2 oz (36 g)

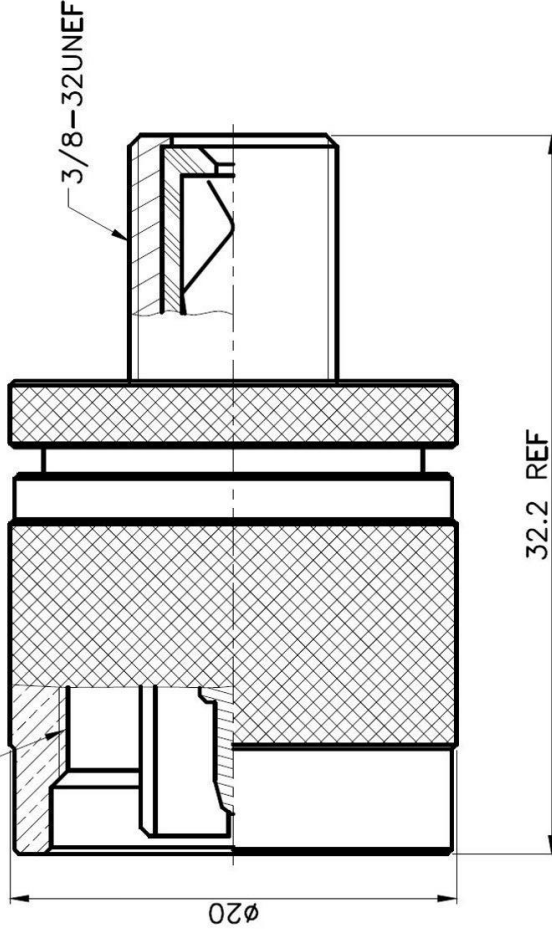
Environmental Specifications

Temperature	Spec
Operating Range	-65 to +165 deg C

Compliance Certifications (see product page for current documentation)

Availability Click the following link (or enter part number in the “SEARCH” bar at the top of any page of the website) to obtain additional part information including price, inventory and certifications: <https://mgs4u.com/product/type-n-male-to-type-f-female-adapter-7325/>

5/8-24UNEF-2B



MGS MAX-GAIN
SYSTEMS, INC.

Max-Gain Systems, Inc.
150 Dodd Street SE, Marietta, GA 30060
Phone: (770) 973-6251 | Fax: (678) 401-3854
Website: www.mgs4u.com | E-Mail: sales@mgs4u.com

TITLE: Type N male to Type F female Adapter

PART NO		DATE	
APPROVED		DATE	
CHECKED		DATE	
DRAWN		DATE	
DRAWING NO: 7325		CAGE CODE: 7JZZ8	
UNLESS OTHERWISE SPECIFIED TOLERANCES		UNIT: mm	
0.5-5 = ±0.2		SCALE: -	
5-30 = ±0.4			
30-120 = ±0.6			
120-315 = ±1			
315-1000 = ±1.6			
1000-2000 = ±2.4			
NO.	DESCRIPTION	MATERIAL	QTY
	SHELL	BRASS	1
	C RING	BRASS	1
	GASKET	RUBBER	1
	PIN	BRASS	1
	INSULATOR	DELIN	1
	BODY	BRASS	1
		NICKEL	
		FINISH	