



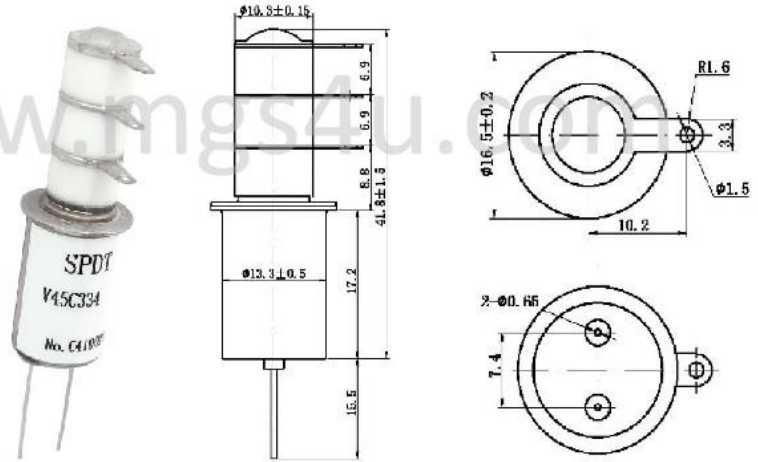
GREENSTONE USA INC.

Vacuum Relays

V45C

Reference Model, Kilovac/Jennings: K45C/RF1D.

- Slim design is extremely space efficient in multi-relay applications.
- RF efficient design offers high power handling in a small package.
- Can be mounted and used in any position.



SPECIFICATIONS			
Contact & Ratings		Units	V45C
Contact Form			C
Contact Arrangement			SPDT
Voltage, Test Max., Contacts & to Base (15µA Leakage Max., dc or 60Hz)		KV Peak	6
Voltage, Operating Max., Contacts & to Base (15µA Leakage Max.)	dc or 60Hz	KV Peak	5
	2.5MHz	KV Peak	4.5
	16MHz	KV Peak	3.5
	32MHz	KV Peak	2.8
Current, Continuous Carry Max.	dc or 60Hz	Amps	20
	2.5MHz	Amps	16
	16MHz	Amps	10
	32MHz	Amps	8
Coil Hi-Pot (V RMS, 60Hz)		V	500
Capacitance	Across Open Contacts	pF	1.6
	Contacts to Ground	pF	2
Resistance, Contact Max@1A, 28Vdc		ohms	0.05
Operate Time		ms	10
Release Time		ms	10
Life, Mechanical		Cycles	2 million
Weight, Nominal		g (oz)	21 (0.75)
Vibration, Operation, Sine (55~2000 Hz Peak)		G's	10
Shock, Operating, 1/2 Sine 11ms(Peak)		G's	30
Temperature Ambient Operating		°C	-55 to +125

COIL RATINGS		
Nominal, Vdc, Max.	12	26.5
Pick-up, Vdc, Max.	8	16
Drop-out, Vdc	0.5-5	1-10
Coil Resistance (Ohms, ±10%)	230	920

*Ratings listed are for 25°C, sea level conditions.

