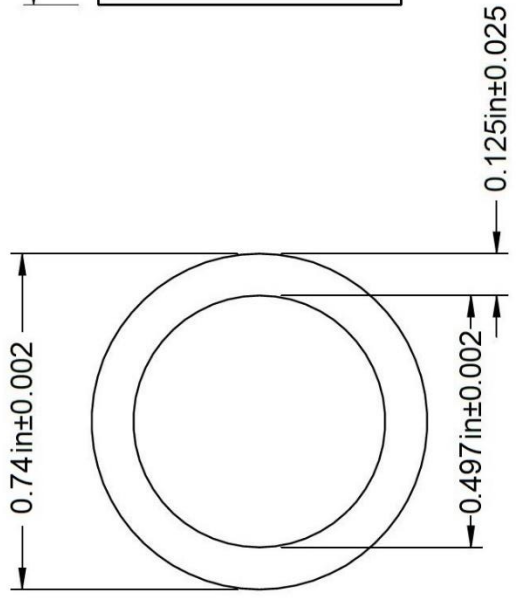
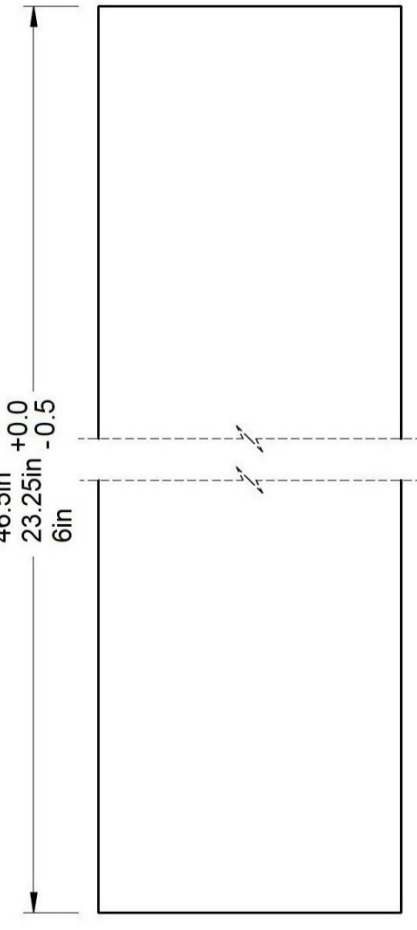


Stocked lengths shippable  
by standard parcel carriers

93in  
46.5in +0.0  
23.25in -0.5  
6in



**Need a Custom Length?**  
Inquire at [sales@mgs4u.com](mailto:sales@mgs4u.com)  
Tell us what diameter, how many  
pieces, and at what length.  
We can produce at the longest  
length that can ship.  
Need 20 footers? Let us know!  
United States domestically  
manufactured quality.



Straightness Tolerance 0.12" per ft.

NO. DESCRIPTION		PART NO		DATE
RANDOM DIRECTION MAT		APPROVED		DATE
POLYMERIZATION INITIATOR		CHECKED		DATE
ISOTHALIC POLYESTER		DRAWN		DATE
GLASS		UNIT: in		
CATALYST		COLOR SELECTED		
RESIN		FINISH		
DYE / PIGMENT		%		
MATERIAL		50		
CREME / CLEAR		2-3		
45-47		1-2		
TITLE: 0.75inch OD Round Hollow Tube with 1/2 inch ID, 1/8" wall.		DRAWING NO: RT-34		
CAGE CODE: 7JZZ8				

Max-Gain Systems, Inc.  
150 Dodd Street SE, Marietta, GA, 30060  
Phone: (770) 973-6251 | Fax: (678) 401-3854  
Website: [www.mgs4u.com](http://www.mgs4u.com) | E-Mail: [sales@mgs4u.com](mailto:sales@mgs4u.com)