



150 Dodd Street SE  
Marietta, GA. 30060

**Phone:** 770-973-6251  
**Fax:** 678-401-3854  
**Cage Code:** 7JZZ8

**Email:** [info@mgs4u.com](mailto:info@mgs4u.com)  
**Website:** [www.mgs4u.com](http://www.mgs4u.com)

SMA female Right Angle PC Board Mount Connector



## Technical Data Sheet

This SMA female Right Angle PC Board Mount Connector is one of several thousand RF products available from Max-Gain Systems, Inc.

This connector is made from a Solid Brass body that is precision machined and plated with Gold for superior performance and value. This SMA female Right Angle PC Board Mount has a PTFE dielectric and a gold plated brass center pin. The SMA female provides a jack and exterior threads enabling a sub-miniature and tight-locking connection for use at higher frequencies.

## Material Specifications

### SMA female Right Angle PC Board Mount Connector

Part Number 7818-RA

Description	Material	Plating
Pin	Phosphor Bronze	Gold
Insulator	PTFE	White
Body	Brass	Gold

## Electrical Specifications

Criteria	Dimension
Impedance (Nominal)	50 Ohms
Frequency Range	DC to 18 GHz
Working Voltage	335

## Mechanical Specifications

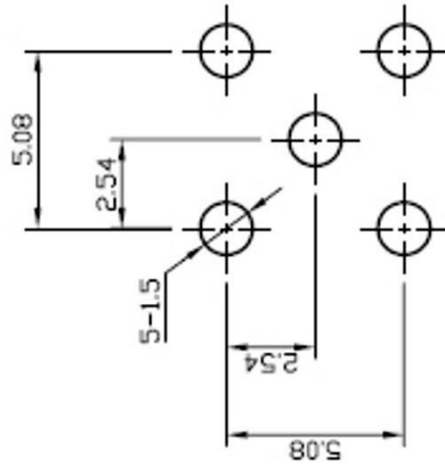
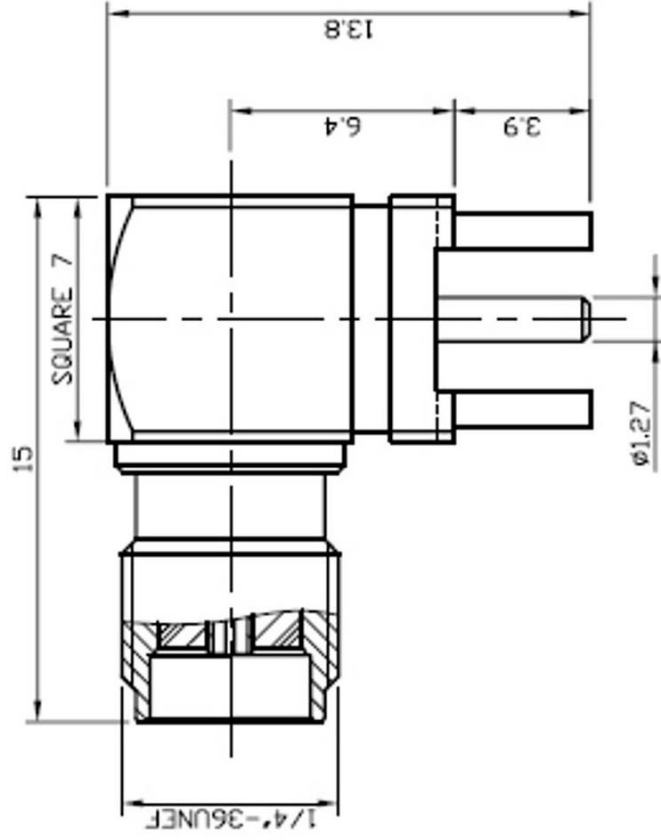
Size	Dimension
Length	0.59 in (15 mm)
Width	0.28 in (7 mm)
Height	0.54 in (13.8 mm)
Weight	0.1 oz (3 g)

## Environmental Specifications

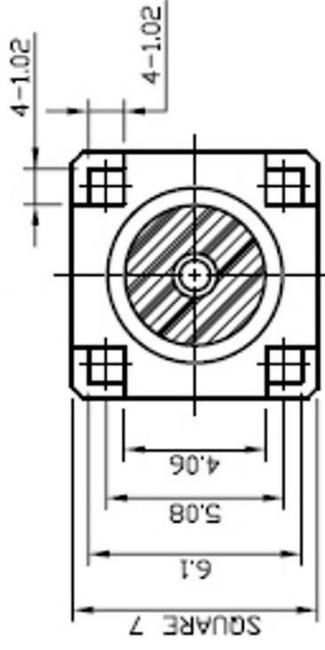
Temperature	Spec
Operating Range	-65 to +165 deg C

## Compliance Certifications (see product page for current documentation)

**Availability** Click the following link (or enter part number in the “SEARCH” bar at the top of any page of the website) to obtain additional part information including price, inventory and certifications: <https://mgs4u.com/product/sma-female-right-angle-pc-board-mount-connector-7818-ra/>



### RECOMMENDED MOUNTING HOLES



**MGS** MAX-GAIN  
SYSTEMS, INC.

Max-Gain Systems, Inc.  
150 Dodd Street SE, Marietta, GA, 30060  
Phone: (770) 973-6251 | Fax: (678) 401-3854  
Website: [www.mgs4u.com](http://www.mgs4u.com) | E-Mail: [sales@mgs4u.com](mailto:sales@mgs4u.com)

TITLE: SMA female Right Angle PC Board Mount  
Connector

DRAWING NO: 7818-RA

FILE NO : .

PART NO		DATE	
APPROVED		DATE	
CHECKED		DATE	
DRAWN		DATE	
UNLESS OTHERWISE SPECIFIED TOLERANCES		UNIT: mm	
0.5-5 = $\pm 0.2$		SCALE: .	
5-30 = $\pm 0.4$			
30-120 = $\pm 0.6$			
120-315 = $\pm 1$			
315-1000 = $\pm 1.6$			
1000-2000 = $\pm 2.4$			
PIN		PHOSPHOR BRONZE	GOLD
INSULATOR		TEFLON	WHITE
BODY		BRASS	GOLD
NO. DESCRIPTION		MATERIAL	FINISH
		QTY	