



150 Dodd Street SE
Marietta, GA. 30060

Phone: 770-973-6251
Fax: 678-401-3854
Cage Code: 7JZZ8

Email: info@mgs4u.com
Website: www.mgs4u.com

SMA female 2-Hole Panel Mount Solder Connector



Technical Data Sheet

This SMA Female 2-Hole Panel Mount Solder Connector is one of several thousand RF products available from Max-Gain Systems, Inc.

This connector is made from a Solid Brass body that is precision machined and plated with Gold for superior performance and value. This SMA Female 2-Hole Panel Mount Solder Connector has a PTFE dielectric and a gold plated brass center pin. The SMA female provides a jack and exterior threads enabling a sub-miniature and tight-locking connection for use at higher frequencies.

Material Specifications

SMA female 2-Hole Panel Mount Solder Connector

Part Number 7813

Description	Material	Plating
Pin	Phosphor Bronze	Gold
Insulator	PTFE	White
Body	Brass	Gold

Electrical Specifications

Criteria	Dimension
Impedance (Nominal)	50 Ohms
Frequency Range	DC to 18 GHz
Working Voltage	335

Mechanical Specifications

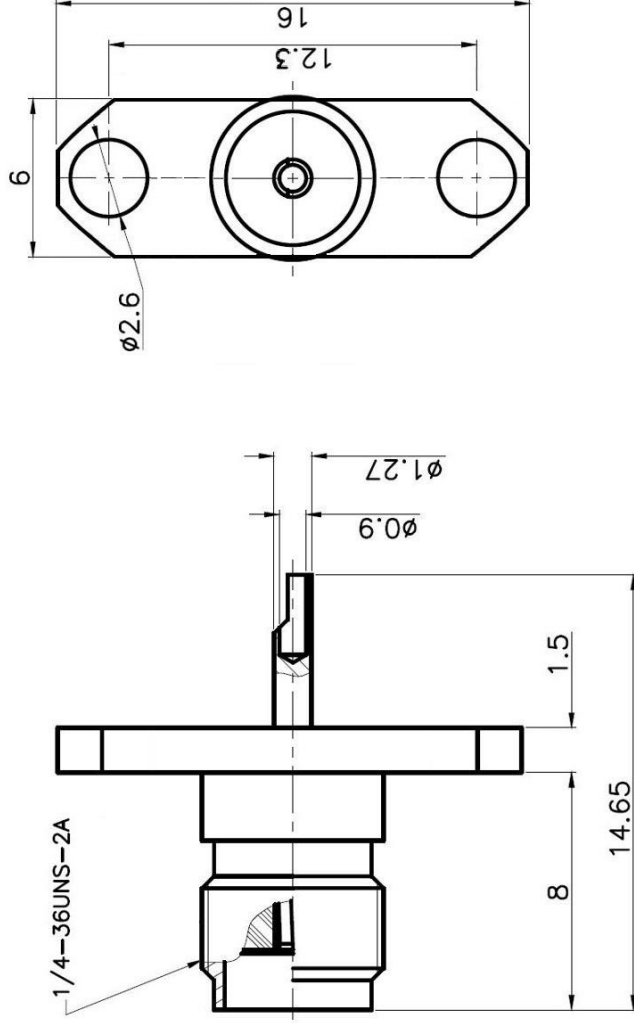
Size	Dimension
Length	0.58 in (14.65 mm)
Width	0.24 in (6 mm)
Height	0.63 in (16 mm)
Weight	0.1 oz (3 g)

Environmental Specifications

Temperature	Spec
Operating Range	-65 to +165 deg C

Compliance Certifications (see product page for current documentation)

Availability Click the following link (or enter part number in the “SEARCH” bar at the top of any page of the website) to obtain additional part information including price, inventory and certifications: <https://mgs4u.com/product/sma-female-2-hole-panel-mount-solder-connector-for-0-100-inch-od-coax-7813/>



MGS MAX-GAIN SYSTEMS, INC.

Max-Gain Systems, Inc.
150 Dodd Street SE, Marietta, GA, 30060
Phone: (770) 973-6251 | Fax: (678) 401-3854
Website: www.mgs4u.com | E-Mail: sales@mgs4u.com

TITLE: SMA female 2-Hole Panel Mount Solder Connector
DRAWING NO: 7813
FILE NO : .

PART NO		DATE	
APPROVED		DATE	
CHECKED		DATE	
DRAWN		DATE	
UNLESS OTHERWISE SPECIFIED TOLERANCES		UNIT: mm	
0.5-5 = ±0.2		SCALE: .	
5-30 = ±0.4			
30-120 = ±0.6			
120-315 = ±1			
315-1000 = ±1.6			
1000-2000 = ±2.4			
PIN	PHOSPHOR BRONZE	GOLD	1
INSULATOR	TEFLON	WHITE	1
BODY	BRASS	GOLD	1
NO. DESCRIPTION	MATERIAL	FINISH	QTY