



150 Dodd Street SE
Marietta, GA. 30060

Phone: 770-973-6251
Fax: 678-401-3854

Email: info@mgs4u.com
Website: www.mgs4u.com

RP-SMA female to Type F female Adapter



Technical Data Sheet

This RP-SMA female to Type F female adapter is one of several thousand RF products available from Max-Gain Systems, Inc. This adapter is a between series coaxial adapter.

This adapter is made from a Solid Brass body that is precision machined and plated with Gold for superior performance and value. This RP-SMA female to Type F female adapter has a PTFE dielectric and a gold plated brass center pin. The RP-SMA female side provides the same threads as an SMA female and pins that are normally found in SMA male connections; RP-SMA connections are popular in Wi-Fi, WiMAX, and other computer applications. The Type F female side provides threads that ensure a perfect connection allowing use at higher frequencies.

Material Specifications

RP-SMA female to Type F female Adapter

Part Number 8523

Description	Material	Plating
Center Pin	Brass	Gold
Insulator	PTFE	White
Body	Brass	Gold

Mechanical Specifications

Size	Dimension
Length	0.83 in (21 mm)
Width	0.46 in (11.6 mm)
Height	0.46 in (11.6 mm)
Weight	0.28 oz (8 g)

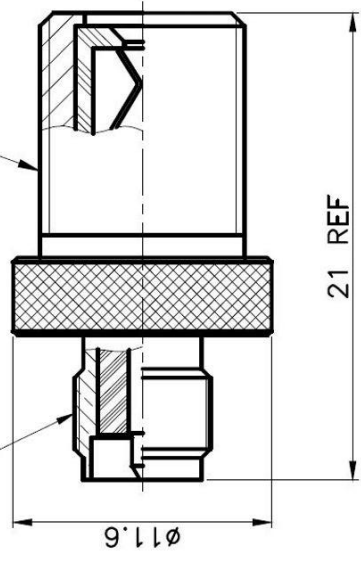
Environmental Specifications

Temperature	Spec
Operating Range	-65 to +165 deg C

Compliance Certifications (see product page for current documentation)

Availability Click the following link (or enter part number in the “SEARCH” bar at the top of any page of the website) to obtain additional part information including price, inventory and certifications: <https://mgs4u.com/product/rp-sma-female-to-type-f-female-adapter/>

1/4-36UNS-2A



3/8-32UNEF-2A

21 REF

11.6



Max-Gain Systems, Inc.
 150 Dodd Street SE, Marietta, GA, 30060
 Phone: (770) 973-6251 | Fax: (678) 401-3854
 Website: www.mgs4u.com | E-Mail: sales@mgs4u.com

TITLE: RP-SMA female to Type F female Adapter

DRAWING NO: 8523
 FILE NO : .

PART NO	DATE
APPROVED	DATE
CHECKED	DATE
DRAWN	DATE

UNLESS OTHERWISE SPECIFIED TOLERANCES	UNIT: mm
0.5-5 = ±0.2	
5-30 = ±0.4	
30-120 = ±0.6	
120-315 = ±1	
315-1000 = ±1.6	
1000-2000 = ±2.4	

NO.	DESCRIPTION	MATERIAL	FINISH
	PIN	BRASS	GOLD
	INSULATOR	TEFLON	WHITE
	BODY	BRASS	GOLD
		MATERIAL	FINISH