



150 Dodd Street SE
Marietta, GA. 30060

Phone: 770-973-6251
Fax: 678-401-3854

Email: info@mgs4u.com
Website: www.mgs4u.com

UHF female to mini-UHF female Adapter



Technical Data Sheet

This UHF female to mini-UHF female adapter is one of several thousand RF products available from Max-Gain Systems, Inc. This adapter is a between series coaxial adapter.

This adapter is made from a Solid Brass body that is precision machined and plated with Nickel for superior performance and value. This UHF female to mini-UHF female has a Delrin dielectric and a gold plated brass center pin. The UHF female side (also known as a SO-239 connection) is by far the most popular connection type used in Amateur Radio. The mini-UHF female side provides a jack and threaded connection used in applications such as: automotive, amateur radio, cellular, and others where size and weight are critical factors.

Material Specifications

UHF female to mini-UHF female Adapter

Part Number 7543

Description	Material	Plating
Center Pin	Brass	Gold
Body	Brass	Nickel
Shell	Brass	Nickel
Insulator	PTFE	White

Mechanical Specifications

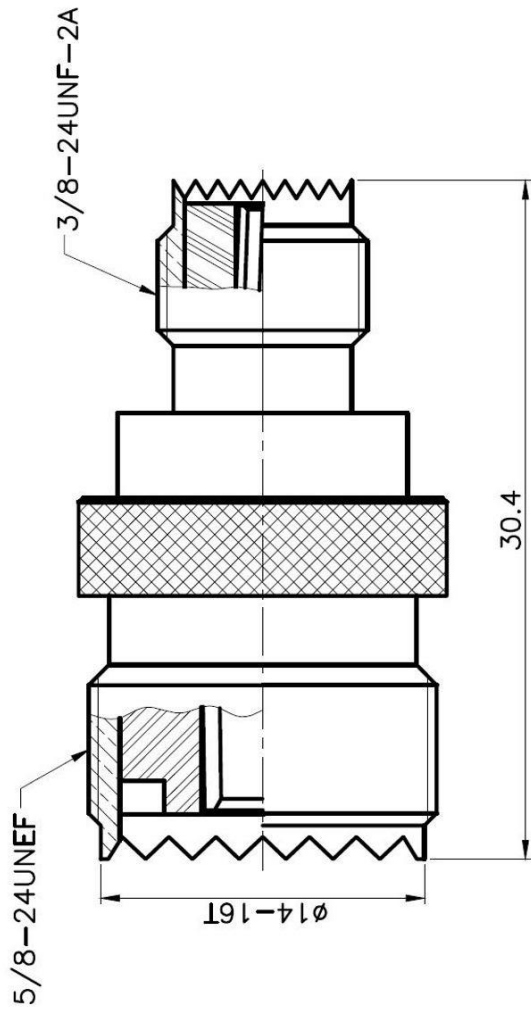
Size	Dimension
Length	1.20 in (30.4 mm)
Width	0.61 in (15.5 mm)
Height	0.61 in (15.5 mm)
Weight	0.5 oz (14 g)

Environmental Specifications

Temperature	Spec
Operating Range	-65 to +165 deg C

Compliance Certifications (see product page for current documentation)

Availability Click the following link (or enter part number in the “SEARCH” bar at the top of any page of the website) to obtain additional part information including price, inventory and certifications: <https://mgs4u.com/product/uhf-female-to-mini-uhf-female-adapter-7543/>



Max-Gain Systems, Inc.
 150 Dodd Street SE, Marietta, GA 30060
 Phone: (770) 973-6251 | Fax: (678) 401-3854
 Website: www.mgs4u.com | E-Mail: sales@mgs4u.com

TITLE: UHF female to mini-UHF female Adapter
 DRAWING NO: 7543
 FILE NO :

PART NO		DATE	
APPROVED		DATE	
CHECKED		DATE	
DRAWN		DATE	
UNLESS OTHERWISE SPECIFIED TOLERANCES		UNIT: mm	
0.5-5 = ±0.2		SCALE: .	
5-30 = ±0.4			
30-120 = ±0.6			
120-315 = ±1			
315-1000 = ±1.6			
1000-2000 = ±2.4			
NO.	DESCRIPTION	MATERIAL	QTY
	PIN	BRASS	GOLD
	INSULATOR	DELFIN	WHITE
	BODY	BRASS	NICKEL
			FINISH