



150 Dodd Street SE
Marietta, GA. 30060

Phone: 770-973-6251
Fax: 678-401-3854

Email: info@mgs4u.com
Website: www.mgs4u.com

QC sleeve for standard crimp on UHF-male

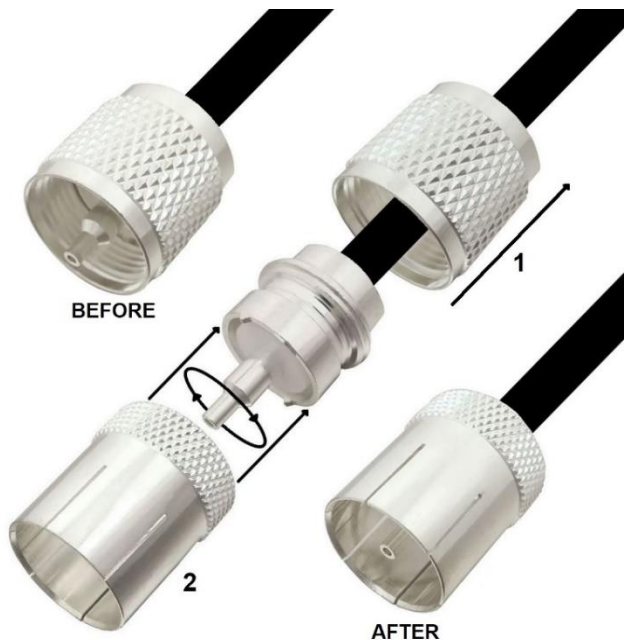


Technical Data Sheet

This UHF male Quick Connect Sleeve is one of several thousand RF products available from Max-Gain Systems, Inc. This sleeve is to be used on crimp type UHF male connectors only.

This connector is made from a Solid Brass body that is precision machined and plated with Silver for superior performance and value. The QC sleeve is to change any UHF male Crimp On connectors into a quick connect connector with the lowest loss possible. This sleeve can be used on uninstalled connectors and even on connectors that are already installed on to coax.

See installation guide on page 4



Material Specifications

QC sleeve for standard crimp on UHF-male

Part Number 7505-QC

Description	Material	Plating
Shell	Brass	Silver

Mechanical Specifications

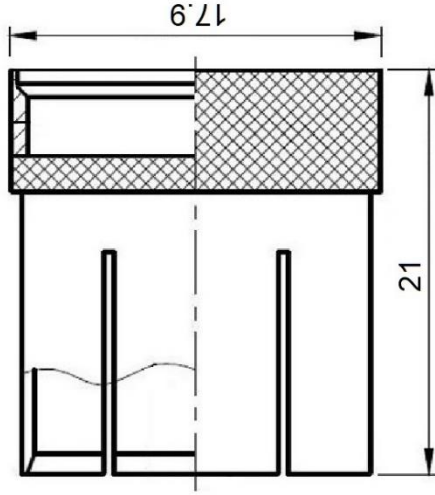
Size	Dimension
Length	0.82 in (21 mm)
Width	0.70 in (17.9 mm)
Height	0.70 in (17.9 mm)
Weight	0.2 oz (8 g)

Environmental Specifications

Temperature	Spec
Operating Range	-65 to +165 deg C

Compliance Certifications (see product page for current documentation)

Availability Click the following link (or enter part number in the “SEARCH” bar at the top of any page of the website) to obtain additional part information including price, inventory and certifications: <https://mgs4u.com/product/7505-qc/>



MGS MAX-GAIN SYSTEMS, INC.

Max-Gain Systems, Inc.
 150 Dodd Street SE, Marietta, GA. 30060
 Phone: (770) 973-6251 | Fax: (678) 401-3854
 Website: www.mgs4u.com | E-Mail: sales@mgs4u.com

TITLE: QC sleeve for standard crimp on UHF-male

DRAWING NO: 7505-QC

FILE NO :

NO.	DESCRIPTION	MATERIAL	FINISH	QTY	UNIT: mm	SCALE: .	PART NO	DATE
							APPROVED	DATE
							CHECKED	DATE
							DRAWN	DATE
	BODY	BRASS	SILVER	1				

UNLESS OTHERWISE SPECIFIED TOLERANCES
 0.5-5 = ±0.2
 5-30 = ±0.4
 30-120 = ±0.6
 120-315 = ±1
 315-1000 = ±1.6
 1000-2000 = ±2.4

Installation Guide

Installing this QC sleeve onto a connector already installed on a piece of coax is done in only two steps



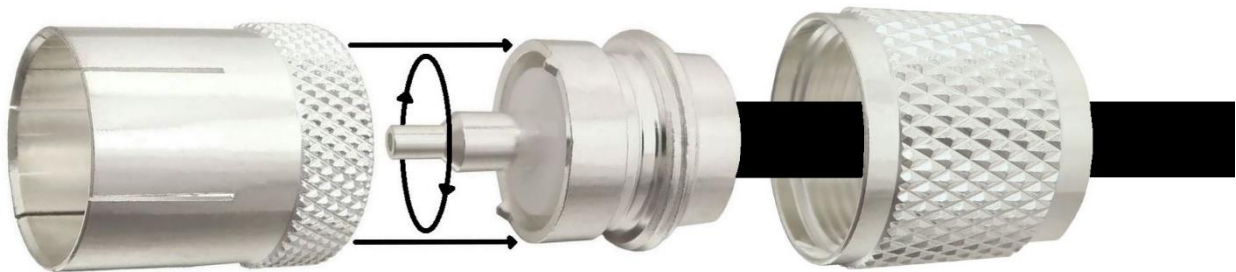
Step 1

Unscrew the outer shell of your connector back onto the coax.

Tip: You can either let the outer shell loosely hang onto your piece of coax OR grab a piece of tape and tape in onto the coax.

Step 2

Screw the QC sleeve into place from the front of the connector's main body.



Your crimp on UHF male connector has now been converted into a quick connect version without adding the loss from adding an adapter.

