



150 Dodd Street SE
Marietta, GA. 30060

Phone: 770-973-6251
Fax: 678-401-3854

Email: info@mgs4u.com
Website: www.mgs4u.com

SMA male to SMA male Antenna Adapter



Technical Data Sheet

This SMA male to SMA male antenna adapter is one of several thousand RF products available from Max-Gain Systems, Inc. This antenna adapter is a between series coaxial handy talkie adapter.

This handie talkie adapter is made from a Solid Brass body that is precision machined and plated with Black Chrome for superior performance and value. This SMA male to SMA male antenna adapter has a PTFE dielectric and a gold plated brass center pin. The SMA male side's plug and interior threads provide a sub-miniature and tight-locking connection for use at higher frequencies. This SMA male to SMA male handy talkie adapter has a strain relief skirt and is perfect for adapting and protecting the integrated SMA female connector on your handie talkie radio.

Material Specifications

SMA male to SMA male Antenna Adapter

Part Number 7816-HT

Description	Material	Plating
Pin	Brass	Gold
Insulator	PTFE	White
Body	Brass	Black Chrome

Mechanical Specifications

Size	Dimension
Length	0.745 in (18.9 mm)
Width	0.512 in (13 mm)
Height	0.512 in (13 mm)
Weight	0.6 oz (16 g)

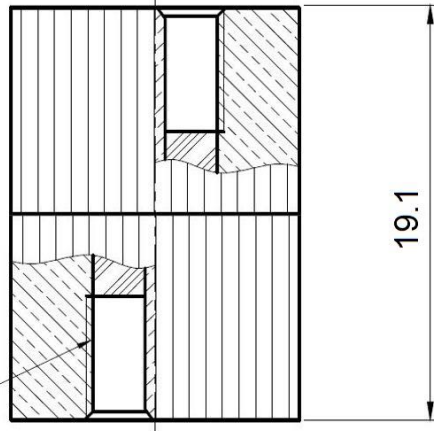
Environmental Specifications

Temperature	Spec
Operating Range	-65 to +165 deg C

Compliance Certifications (see product page for current documentation)

Availability Click the following link (or enter part number in the “SEARCH” bar at the top of any page of the website) to obtain additional part information including price, inventory and certifications: <https://mgs4u.com/product/sma-male-to-sma-male-antenna-adapter-7816-ht/>

1/4-36UNS-2B



MGS MAX-GAIN SYSTEMS, INC.

Max-Gain Systems, Inc.
 150 Dodd Street SE, Marietta, GA. 30060
 Phone: (770) 973-6251 | Fax: (678) 401-3854
 Website: www.mgs4u.com | E-Mail: sales@mgs4u.com

TITLE: SMA male to SMA male Antenna Adapter

DRAWING NO: 7816-HT

FILE NO : .

		PART NO	DATE
		APPROVED	DATE
		CHECKED	DATE
		DRAWN	DATE
		UNLESS OTHERWISE SPECIFIED TOLERANCES 0.5-5 ±0.2 5-30 ±0.4 30-120 ±0.6 120-315 ±1 315-1000 ±1.6 1000-2000 ±2.4	
		UNIT: mm	
		SCALE: .	
PIN	BRASS		GOLD
INSULATOR	TEFLON		WHITE
BODY	BRASS		BLACK CHROME
NO. DESCRIPTION	MATERIAL		FINISH