

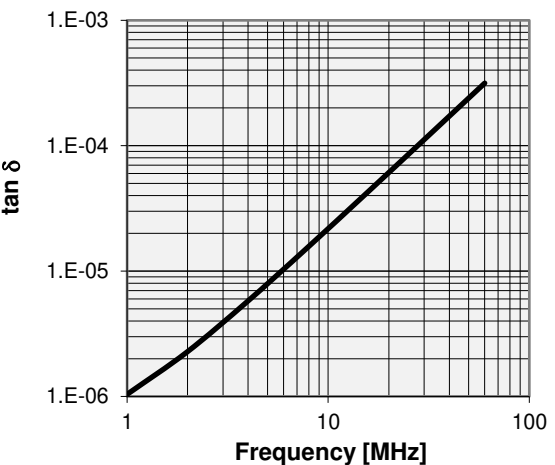
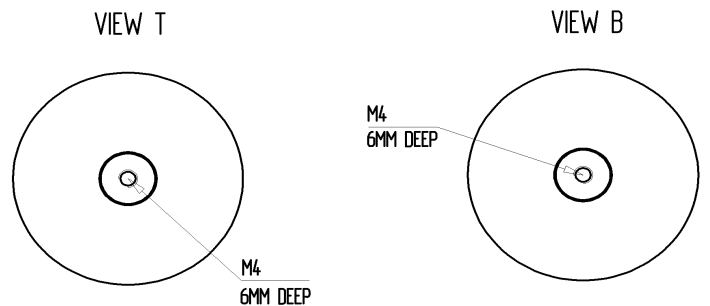
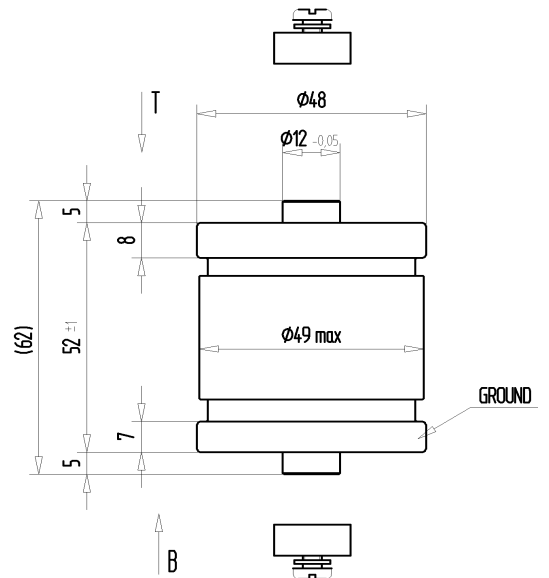
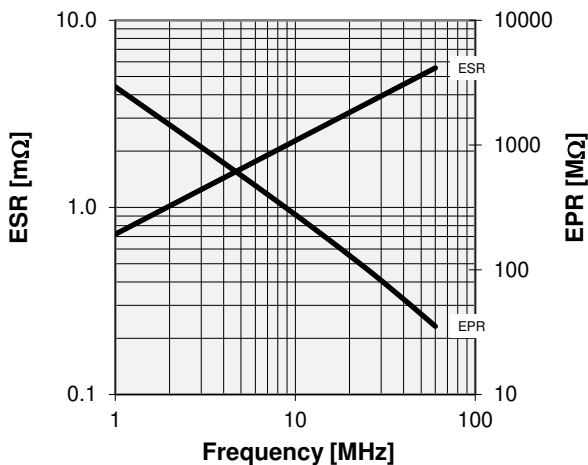
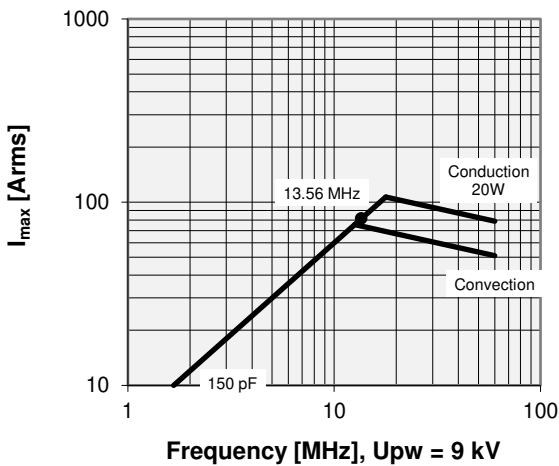
CFMN-150CAC/15-AF-G

Old Type Designation: MC1C-150E

Specifications

Capacitance C_{max} (nominal)	150 pF
Voltage (Peak Test U_{pt} / Peak Working U_{pw})	15 kV / 9 kV
Capacitance Tolerance	5%
Max. Current I_{max} at 13.56 MHz with	81 Arms
Conduction Cooling	20 W
Net Weight	0.39 kg

I_{max} at 25°C ambient and 125°C surface temp. for convection and conduction (20 W) cooling



Special Features:
Capacity Tolerance 5%, RoHS Compliant

Note:
Technical information in Service Bulletin
SB-52 must be considered
Subject to change without prior notice