

## DIY Gaff Hook Pole Assembly Instructions



First, start by laying out and identifying all of your components. You may have a different mix of components than those in the picture, but the assembly is the same. We will go in depth with the assembly of each component and where it is typically installed.

Possible components:

**Fiberglass Rod**  
**Vinyl Handle Grip**  
**Female Couplers**  
**Thread Adapter**  
**Threaded Gaff**

## ADHESIVES and BEST PRACTICES

**Adhesives** such as 50/50 epoxy JB Weld “Original Cold Weld Formula” does the job. JB Weld 2 part epoxy in the Red and Black tubes labeled “original cold weld formula steel reinforced epoxy, which is available in most hardware stores, sets up in a few hours and cures fully in a day or so, applies easily, and works very well.

### J-B WELD (Original Cold-Weld Formula)

Glues which expand as they dry, such as “Gorilla Glue” are **NOT** recommended, because the glue tends to push the pieces off of the rods as it expands which is counterproductive to what you are trying to do.. **Do NOT use PVC cement (purple and clear mixture)**, which works by dissolving PVC and “melting” it together. It will NOT dissolve fiberglass, and will not work at all. **Do NOT use Liquid Nails or any other glue designed for gluing wood.** These glues will not bond well to fiberglass and make a big mess.

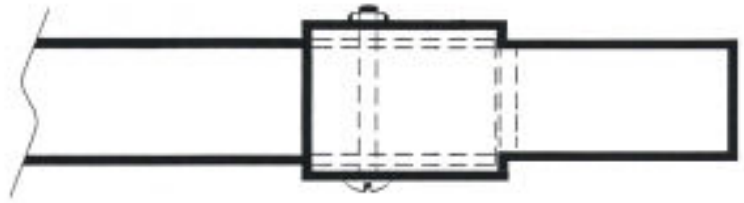


**Surface Prep:** DO NOT clean the fiberglass surface with alcohol, mineral spirits, etc... if you wish to clean the surface, use **ONLY** a damp towel to wipe off surface dust, then dry thoroughly.

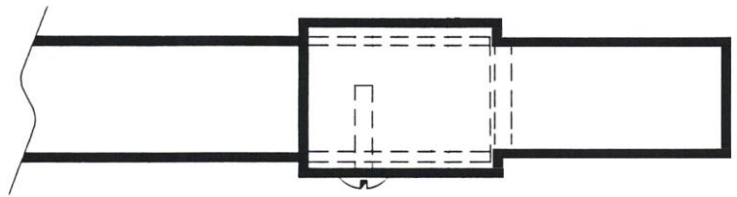
**Best practices when gluing:** When gluing anything onto the end of a solid rod, air pockets can form between the rod and the piece you are attempting to glue on. To avoid this **DO NOT** smear glue around the end of the rod. Instead, apply the adhesive in lengthwise, equidistant, strips around the rod. Leave gaps between the lengthwise strips of adhesive. When attempting to place the piece on the rod this will allow any air to escape between those strips of adhesive. When the piece is fully seated on to the rod, simply twist the piece on the rod and turn it in either direction one quarter turn to then smear the adhesive around the rod.

## PINNING METHODS

**Pinning Method One:** Adhesives are great, but nothing works as well as a physical connection. A pinning method should be used on all parts if you have the capability. Place the part on the end of the tube or rod. With the part "seated" drill a 9/64" hole through the overlap area. Insert a #6:32 machine screw of the corresponding length to the largest diameter piece being drilled. An illustration of this method is below is to the right. For Pinning through our 3/4 inch OD Rod Parts, use #6:32 round-head machine screws with at least 1 inch of threads. For 1 inch OD Rod Parts, use #6:32 round-head machine screws with at least 1.25 inches of threads.



**Pinning Method Two:** Pinning without drilling through the entire assembly. A pinning method should be used on all parts if you have the capability. Place the part on the end of the tube or rod. With the part "seated" drill a 9/64" hole through one side of the overlap area and 1/2 inch into the Solid Rod. Empty the hole of dust then fill with epoxy. Insert a #6:32 machine screw of about 1/2 inch in length into the hole. Wipe away excess epoxy and allow time to set. An illustration of this method is below is to the right. For Pinning through our 3/4 inch OD Rod Parts and 1 inch OD Rod Parts, use #6:32 round-head machine screws with at least 1/2 inch of threads.



## VINYL HANDLE GRIP

The Vinyl Handle Grip is a key part for any gaff hook. It provides a better point for you to grip in order for you to haul up that fish.

**Installation:** When gluing the vinyl handle grip onto the end of a solid rod, air pockets can form between the rod and the t-grip. To avoid this **DO NOT** smear glue around the end of the rod. Instead, apply the adhesive in lengthwise, equidistant, strips around the rod. Leave gaps between the lengthwise strips of adhesive. This will allow any air to escape between those strips of adhesive when attempting to place the vinyl handle grip on the rod. When the vinyl handle grip is fully seated on to the rod, simply twist the vinyl handle grip on the rod and turn it in either direction one quarter turn to then smear the adhesive around the rod.

## FEMALE COUPLER

The Stainless Steel Rod Coupler goes on the opposite end of the fiberglass rod than the vinyl handle grip. This coupler is required to thread the gaff into.

**Installation:** When gluing the stainless steel coupling on to the end of a solid rod, air pockets can form between the rod and the stainless steel coupling. To avoid this **DO NOT** smear glue around the end of the rod. Instead, apply the adhesive in lengthwise, equidistant, strips around the rod. Leave gaps between the lengthwise strips of adhesive. This will allow any air to escape between those strips of adhesive when attempting to place the stainless steel coupler on the rod. When the stainless steel coupler is fully seated on to the rod, simply twist the stainless steel tip on the rod and turn it in either direction one quarter turn to then smear the adhesive around the rod.

## THREAD ADAPTER



**Installation:** The thread adapter is only included when ordering the 1 inch OD Rods. This thread adapter is required to upsize the threads from the 3/8 x 24 threaded gaff hook, up to the 5/8 x 24 threading inside the 1 inch female coupler. Screw this adapter into the 1 inch female coupler OR directly onto the threaded gaff.

**NOTE:** When you screw the threading adapter onto the gaff, it is difficult to remove by hand (if you want to). You may need plier to remove it from the threaded gaff in the future if you choose to). This is by design as most people are going to want this to NOT come off.

## THREADED GAFF HOOK



**Installation:** The threaded gaff hook is by far the easiest part of this installation. Simply thread the gaff hook into the female coupler to a reasonable tightness and you are done!

Thank you for your purchase!



**MAX - GAIN SYSTEMS, INC.**

Max-Gain Systems, Inc.  
221 Greencrest Court  
Marietta, GA 30068-3825  
Phone 770-973-6251  
fax 815-461-7730

<http://www.mgs4u.com>  
email: [sales@mgs4u.com](mailto:sales@mgs4u.com)