

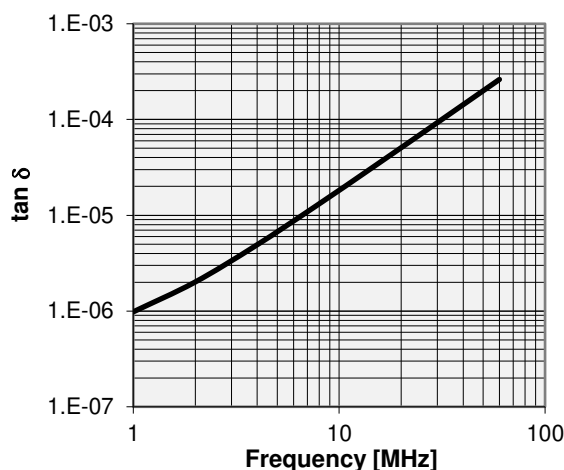
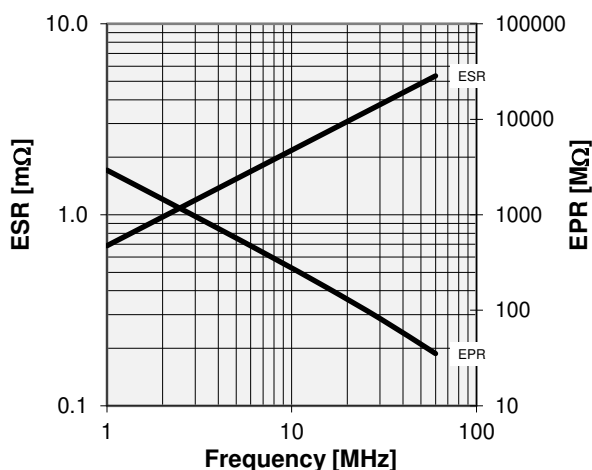
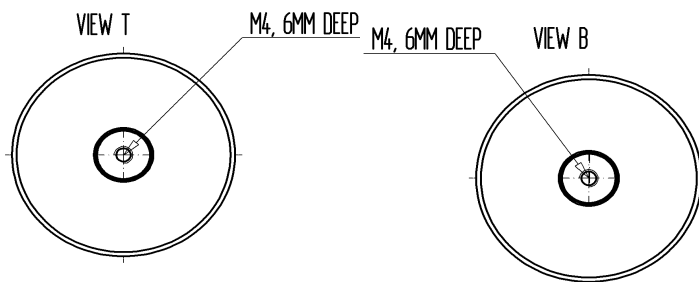
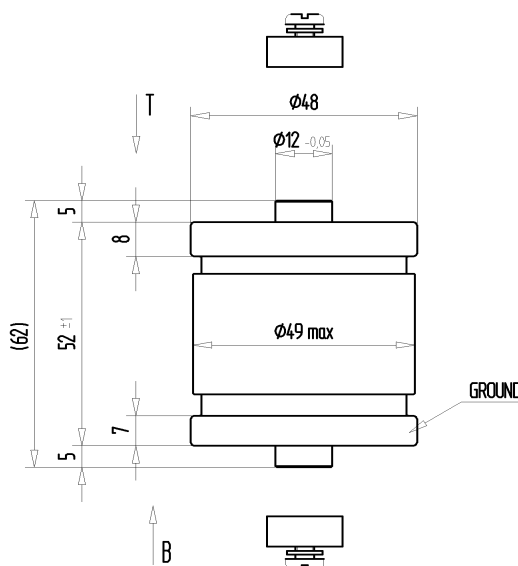
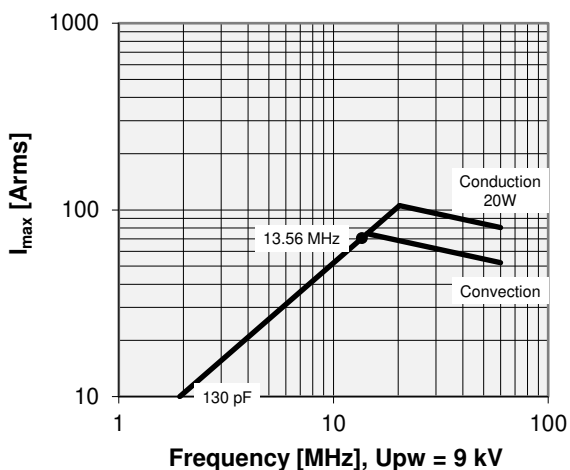
CFMN-130CAC/15-AF-E

Old Type Designation: MC1C-130E

Specifications

Capacity C_{max} (nominal)	130 pF
Voltage (Peak Test U_{pt} / Peak Working U_{pw})	15 kV / 9 kV
Capacity Tolerance	1%
Max. Current I_{max} at 13.56 MHz with	70 Arms
Conduction Cooling	20 W
Net Weight	0.39 kg

I_{max} at 25°C ambient and 125°C surface temp. for convection and conduction (20 W) cooling



Special Features:
Capacity Tolerance 1%

Note:
 Technical information in Service Bulletin
 SB-52 must be considered
 Subject to change without prior notice

Issue: 18-Feb-2008
 Replaces: 27-Mar-2006
 pct.comet.tech