



150 Dodd Street SE
Marietta, GA. 30060

Phone: 770-973-6251
Fax: 678-401-3854

Email: info@mgs4u.com
Website: www.mgs4u.com

RP-SMA female to RP-SMA female Barrel Adapter



Technical Data Sheet

This RP-SMA female to RP-SMA female barrel adapter is one of several thousand RF products available from Max-Gain Systems, Inc. This adapter is an in-series coaxial adapter.

This barrel adapter is made from a Solid Brass body that is precision machined and plated with Gold for superior performance and value. This RP-SMA female to RP-SMA female barrel adapter has a PTFE dielectric and a gold plated brass center pin. Both RP-SMA female sides provide the same threads as an SMA female and pins that are normally found in SMA male connections; RP-SMA connections are popular in Wi-Fi, WiMAX, and other computer applications. This RP-SMA female to RP-SMA female barrel adapter is perfect for joining two sections of coaxial cable that terminate in RP-SMA male connectors.

Material Specifications

RP-SMA female to RP-SMA female Barrel Adapter

Part Number 8517

Description	Material	Plating
Center Pin	Brass	Gold
Insulator	PTFE	White
Body	Brass	Gold

Mechanical Specifications

Size	Dimension
Length	0.50 in (12.6 mm)
Width	0.25 in (6.3 mm)
Height	0.25 in (6.3 mm)
Weight	0.05 oz (1.4 g)

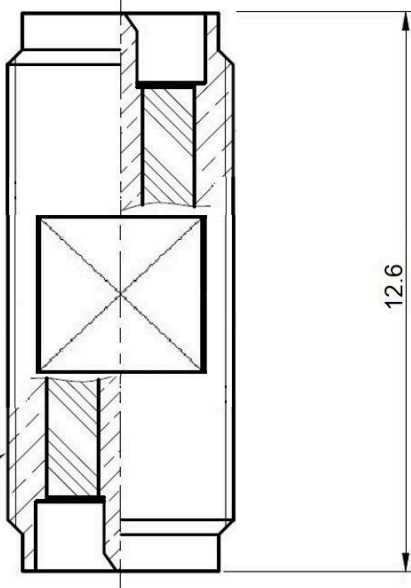
Environmental Specifications

Temperature	Spec
Operating Range	-65 to +165 deg C

Compliance Certifications (see product page for current documentation)

Availability Click the following link (or enter part number in the “SEARCH” bar at the top of any page of the website) to obtain additional part information including price, inventory and certifications: <https://mgs4u.com/product/rp-sma-female-to-rp-sma-female-adapter-8517/>

1/4-36UNS-2A



12.6

MGS MAX-GAIN SYSTEMS, INC.

Max-Gain Systems, Inc.
 150 Dodd Street SE, Marietta, GA. 30060
 Phone: (770) 973-6251 | Fax: (678) 401-3854
 Website: www.mgs4u.com | E-Mail: sales@mgs4u.com

TITLE: RP-SMA female to RP-SMA female
 Barrel Adapter

DRAWING NO: 8517

FILE NO :

		PART NO	DATE	
		APPROVED	DATE	
		CHECKED	DATE	
		DRAWN	DATE	
		UNLESS OTHERWISE SPECIFIED TOLERANCES 0.5-5 = ±0.2 5-30 = ±0.4 30-120 = ±0.6 120-315 = ±1 315-1000 = ±1.6 1000-2000 = ±2.4		
		UNIT: mm		
		SCALE: .		
NO.	DESCRIPTION	MATERIAL	FINISH	QTY
	CONTACT PIN	BRASS	GOLD	
	INSULATOR	TEFLON	WHITE	
	BODY	BRASS	GOLD	