



150 Dodd Street SE
Marietta, GA. 30060

Phone: 770-973-6251
Fax: 678-401-3854

Email: info@mgs4u.com
Website: www.mgs4u.com

UHF female to UHF female 1.125 inch Bulkhead Mount Adapter



Technical Data Sheet

This UHF female to UHF female 1.125 inch bulkhead mount adapter is one of several thousand RF products available from Max-Gain Systems, Inc. This adapter is an in-series coaxial adapter.

This adapter is made from a Solid Brass body that is machined and plated with Nickel for superior performance and value. This UHF female to UHF female 1.125 inch bulkhead mount adapter has a Delrin dielectric and a gold plated brass center pin. Both sides provide a UHF female side (also known as a SO-239 connection) is by far the most popular connection type used in Amateur Radio.

Material Specifications

UHF female to UHF female 1.125 inch Bulkhead Adapter Part Number 7518-UHF-A-1125

Description	Material	Plating
Center Pin	Brass	Gold
Body	Brass	Nickel
Nut	Brass	Nickel
Insulator	Delrin	White

Mechanical Specifications

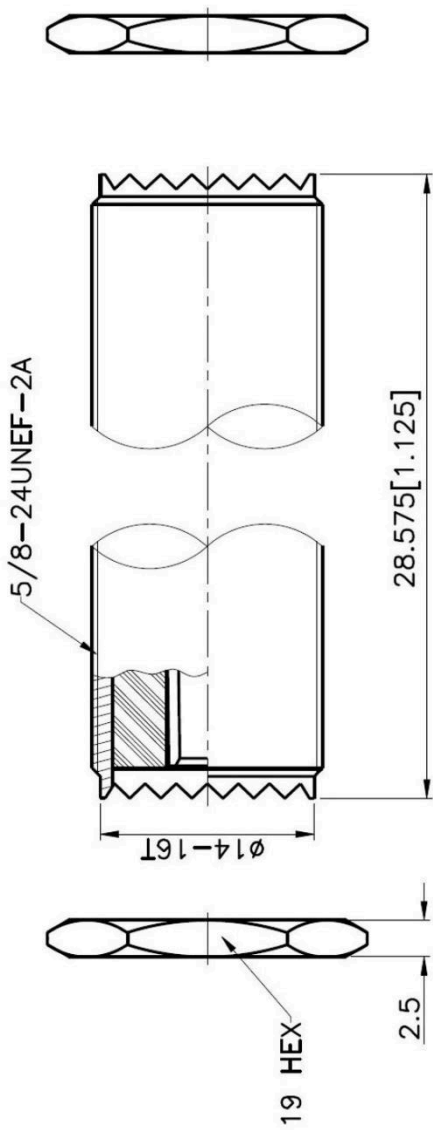
Size	Dimension
Length	1.125 in (28.56 mm)
Width	0.61 in (15.5 mm)
Height	0.61 in (15.5 mm)
Weight	0.9 oz (24 g)

Environmental Specifications

Temperature	Spec
Operating Range	-65 to +165 deg C

Compliance Certifications (see product page for current documentation)

Availability Click the following link (or enter part number in the “SEARCH” bar at the top of any page of the website) to obtain additional part information including price, inventory and certifications: <https://mgs4u.com/product/uhf-female-to-uhf-female-1-125-inch-bulkhead-mount-adapter-7518-uhf-a-1125/>



MGS MAX-GAIN SYSTEMS, INC.

Max-Gain Systems, Inc.
 150 Dodd Street SE, Marietta, GA. 30060
 Phone: (770) 973-6251 | Fax: (678) 401-3854
 Website: www.mgs4u.com | E-Mail: sales@mgs4u.com

UHF female to UHF female 1.125 inch Bulkhead Mount Adapter	
DRAWING NO: 7518-UHF-A-1125	
FILE NO : .	

NO.	DESCRIPTION	MATERIAL	FINISH	UNIT: mm	SCALE: .	PART NO	DATE
						APPROVED	DATE
						CHECKED	DATE
						DRAWN	DATE

UNLESS OTHERWISE SPECIFIED TOLERANCES
 0.5-5 = ±0.2
 5-30 = ±0.4
 30-120 = ±0.6
 120-315 = ±1
 315-1000 = ±1.6
 1000-2000 = ±2.4

NUT	BRASS	NICKEL	
PIN	BRASS	GOLD	
INSULATOR BODY	DELIRIN	WHITE	
	BRASS	NICKEL	
	MATERIAL	FINISH	