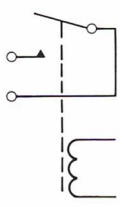
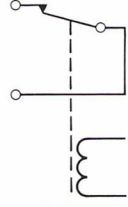



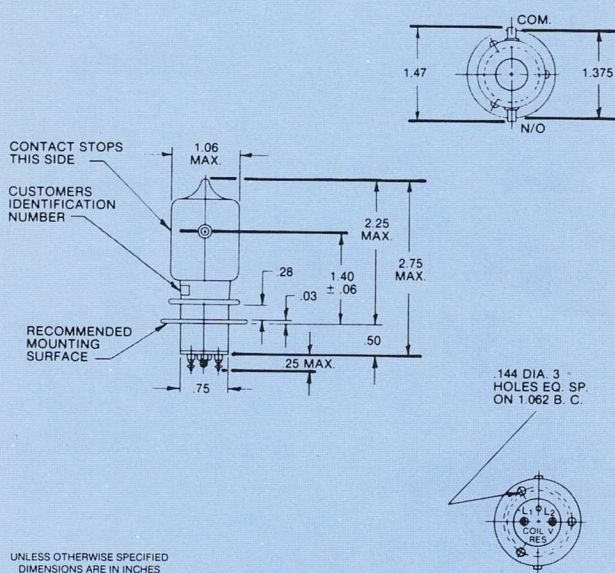


spst vacuum relays

Peak Test Voltage, KVP (to ground, 60 Hz)	15	30	33
Model Number	RD 5A RD 5B RD 6A RD 6B	RS 8 RS 10	RJ 8A
  FORM A FORM B			
Form	A, A, B, B	A, B	A
Rated Operating Voltage (KV Peak) DC or 60 Hz	12	28	28
2.5 MHz	10	25	25
16 MHz	8	12	12
32 MHz	4	7	10
Continuous Current, Carry (Amps, RMS) DC or 60 Hz	15	75	110
2.5 MHz	10	35	60
16 MHz	6	22	40
32 MHz	4	14	30
Contact Capacitance (pF) Between Open Contacts	.5	.8	1.5
Open Contacts to Ground	1.0	1.0	1.3
Contact Resistance (Ohms)	.010	.003	.003
Operate Time (ms. Max.)	18	30	18
Release Time (ms. Max.)	8	10	8
Pull-In Voltage @ 25°C. (26.5 VDC Coil)	16	16	16
Dropout Voltage (-55° to +125°C) (26.5 VDC Coil)	1-10	1-10	1-10
Coil Resistance (Ohms ±10%) (26.5 VDC Coil)	265	120	120
Shock, 1/2 Sine 11 ms (Peak g's)	30	30	30
Vibration, Peak g's 55-500 Hz	10	10	10
55-1000 Hz	5	—	5
55-2000 Hz	5	—	—
Expected Mechanical Life Operations (×10 ⁶)	1	1	2
Weight (ounces) max.	3	7	10



RD 5A-26N300

- N/O, excellent RF voltage and current ratings.
- Flange Mount.
- N400 heavy duty connectors available.

RD 6A-26N300

- N/C version of RD 5A.

RD 5B-26N300

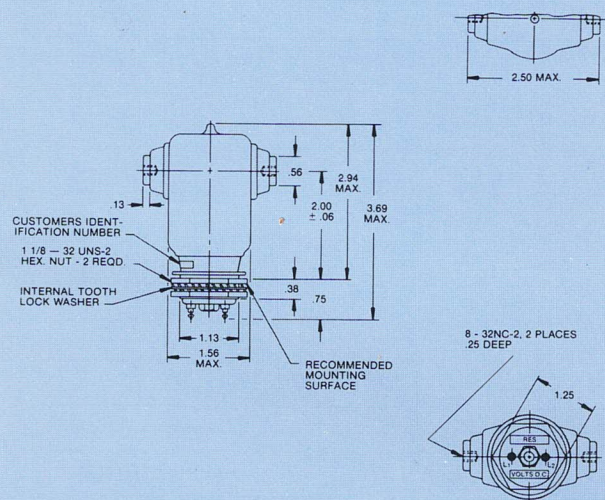
- Thread mount version of RD 5A.

RD 6B-26N300

- Thread mount version of RD 6A.

15

RD 5A
RD 5B
RD 6A
RD 6B



RS 8-26S

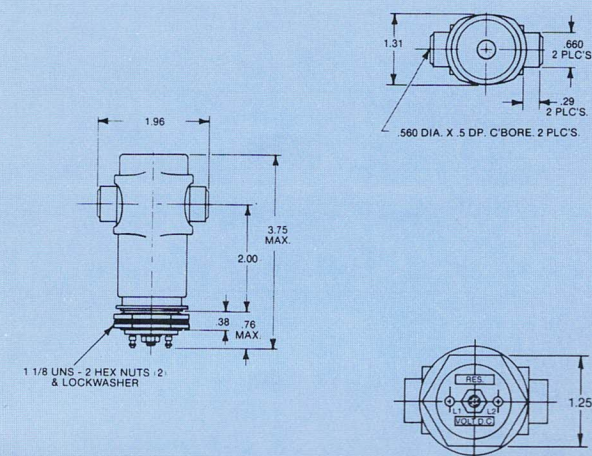
- N/O, thread mount.
- Low resistance contacts for high current R.F.
Not suitable for hot switching.
- Threaded high voltage terminals.

RS 10-26S

- N/C version of RS 8.

30

RS 8
RS 10



RJ 8A-26N765

- N/O, thread mount.
- Threaded high voltage terminals.
- Low resistance copper contacts for high current R.F. Not suitable for hot switching.

33

RJ 8A