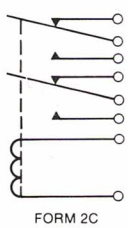
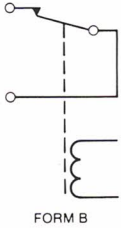

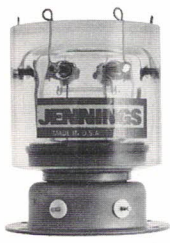




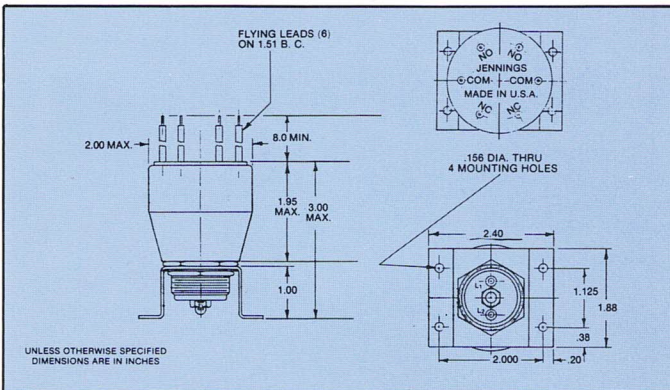
# special purpose gas filled relays

Peak Test Voltage, KVP (to ground, 60 Hz)	14	20	20	70
Model Number	RGD 6	RGD 1	RGD 5	RGH 3
 				
Form	2C	2C	2C	B
Rated Operating Voltage (KV Peak) DC or 60 Hz	7.5	18	18	70
Continuous Current, Carry (Amps, RMS) DC or 60 Hz	30	30	30	15
Power Rating (Watt-Seconds)	400	450	450	—
Contact Resistance (Ohms)	0.1	0.1	0.1	1.0
Operate Time (ms. Max)	20	25	25	N/A
Release Time (ms. Max)	NA	NA	NA	15
Pull-In Voltage @ 25°C. (26.5 VDC Coil)		16	16	18*
(12.0 VDC Coil)	8			
Dropout Voltage (-55° to +125°C) (26.5 VDC Coil)		10	10	16*
(12.0 VDC Coil) (Max)	6			
Coil Resistance (Ohms ±10%) (26.5 VDC Coil)		52	52	24*
(12.0 VDC Coil)	18			
Shock, 1/2 Sine 11 ms (Peak g's)	10	10	10	30
Vibration, Peak g's 10-55 Hz	10	10	10	10
Expected Mechanical Life Operations (×10 <sup>6</sup> )	.5	.5	.5	.5
Weight (ounces) max.	11	16	10	16

\*24VDC coil intermittent duty only. Use 60Ω dropping resistor for continuous hold current.

These high reliability special purpose relays are constructed with the same basic design and material quality as Jennings vacuum relays. They take advantage of the slow arc extinguishing nature of a gas dielectric to eliminate undesirable effects of contact bounce. They are intended for intermittent duty.

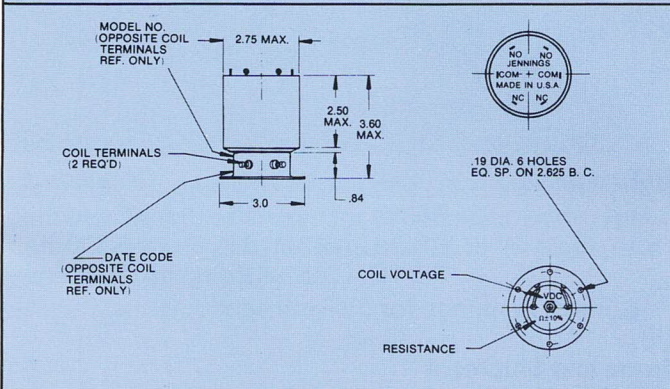
Primary uses are for DC capacitive discharge heart defibrillators. The DPDT configuration allows a circuit to charge a capacitor, then discharge through the paddles, keeping both the patient and the doctor isolated from the high voltage power supply.



#### RGD-6-2C02-0014

- Miniaturized relay for portable capacitive discharge defibrillators.
- Encapsulated.
- Flying leads.
- Flange mount.
- 12 VDC coil.

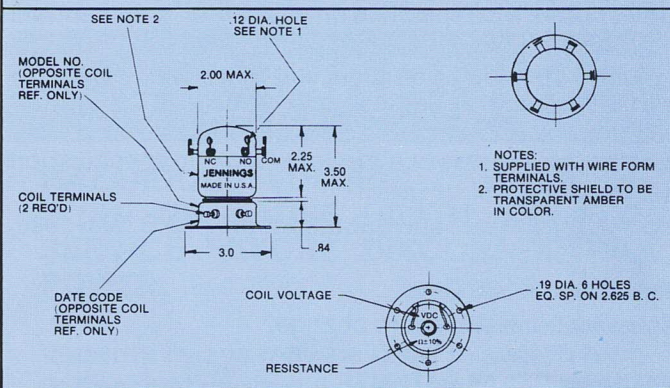
**14**  
RGD 6



#### RGD 1-2C03-0018

- High voltage rating for DC capacitive discharge circuits. Ideal for heavy duty applications.
- Extra heavy encapsulation offers exceptional shock resistance.
- Flange mount.
- Wire terminals for solder connection.

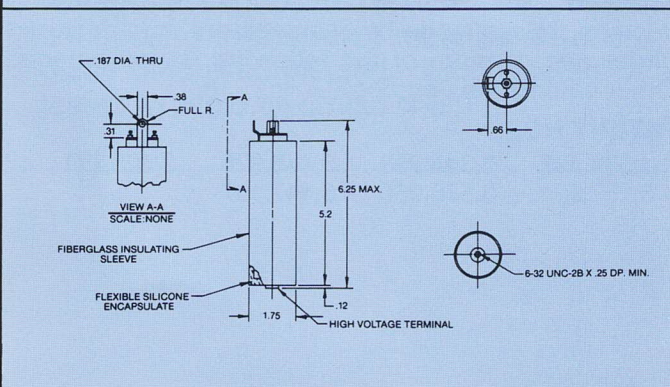
**20**  
RGD 1



#### RGD 5-2C03-0018

- Same as RGD 1, except thinner encapsulation.
- For use where space is at a premium.
- Wire terminals for solder connection.

**20**  
RGD 5



#### RGH 3-24D2524

- N/C grounding switch.
- High voltage rating for DC applications.

**70**  
RGH 3