



150 Dodd Street SE
Marietta, GA. 30060

Phone: 770-973-6251
Fax: 678-401-3854

Email: info@mgs4u.com
Website: www.mgs4u.com

RP-SMA female to SMA female Adapter



Technical Data Sheet

This RP-SMA female to SMA female adapter is one of several thousand RF products available from Max-Gain Systems, Inc. This adapter is a between series coaxial adapter.

This adapter is made from a Solid Brass body that is precision machined and plated with Gold for superior performance and value. This RP-SMA female to SMA female adapter has a PTFE dielectric and a gold plated brass center pin. The RP-SMA female side provides the same threads as an SMA female and pins that are normally found in SMA male connections; RP-SMA connections are popular in Wi-Fi, WiMAX, and other computer applications. The SMA female side's jack and exterior threads provide a sub-miniature and tight-locking connection for use at higher frequencies.

Material Specifications

RP-SMA female to SMA female Adapter

Part Number 8502

| Description | Material | Plating |
|-------------|----------|---------|
| Center Pin | Brass | Gold |
| Insulator | PTFE | White |
| Body | Brass | Gold |

Mechanical Specifications

| Size | Dimension |
|--------|-------------------|
| Length | 0.77 in (19.5 mm) |
| Width | 0.315 in (8 mm) |
| Height | 0.315 in (8 mm) |
| Weight | 0.1 oz (3 g) |

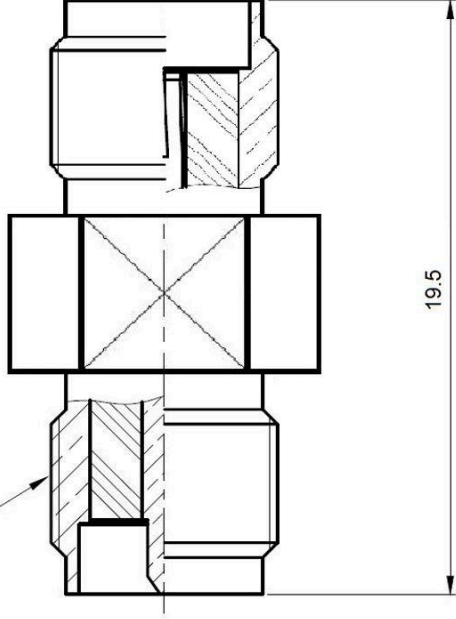
Environmental Specifications

| Temperature | Spec |
|-----------------|-------------------|
| Operating Range | -65 to +165 deg C |

Compliance Certifications (see product page for current documentation)

Availability Click the following link (or enter part number in the “SEARCH” bar at the top of any page of the website) to obtain additional part information including price, inventory and certifications: <https://mgs4u.com/product/rp-sma-female-to-sma-female-adapter-8502/?v=7516fd43adaa>

1/4-36UNS-2A



MGS MAX-GAIN SYSTEMS, INC.

Max-Gain Systems, Inc.
 150 Dodd Street SE, Marietta, GA, 30060
 Phone: (770) 973-6251 | Fax: (678) 401-3654
 Website: www.mgs4u.com | E-Mail: sales@mgs4u.com

TITLE: RP-SMA female to SMA female Adapter

DRAWING NO: 8502

FILE NO :

| | | PART NO | | DATE | | | |
|-----------------|--|--|--|--------|--|----------|--|
| | | APPROVED | | DATE | | | |
| | | CHECKED | | DATE | | | |
| | | DRAWN | | DATE | | | |
| | | UNLESS OTHERWISE SPECIFIED TOLERANCES 0.5-5 = ±0.2 5-30 = ±0.4 30-120 = ±0.6 120-315 = ±1 315-1000 = ±1.6 1000-2000 = ±2.4 | | | | UNIT: mm | |
| | | SCALE: . | | | | | |
| | | | | QTY | | | |
| | | | | FINISH | | | |
| | | BRASS | | GOLD | | | |
| | | TEFLON | | WHITE | | | |
| | | BRASS | | GOLD | | | |
| | | MATERIAL | | FINISH | | | |
| NO. DESCRIPTION | | | | | | | |