

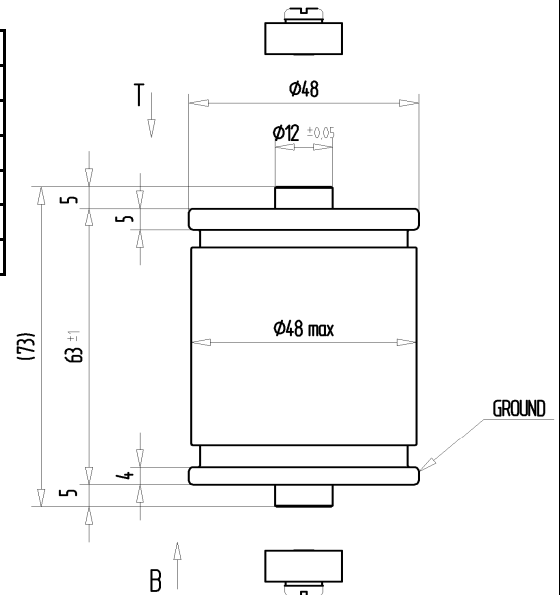
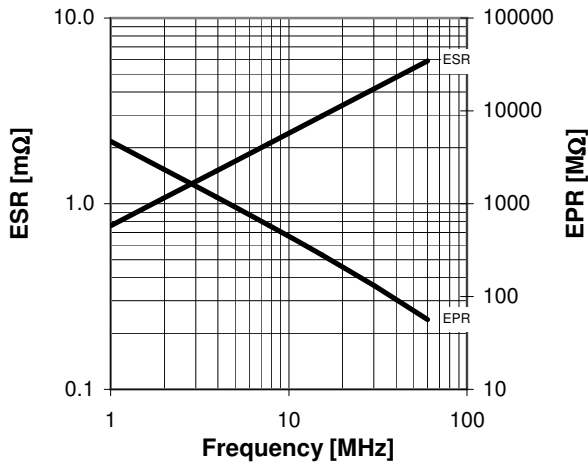
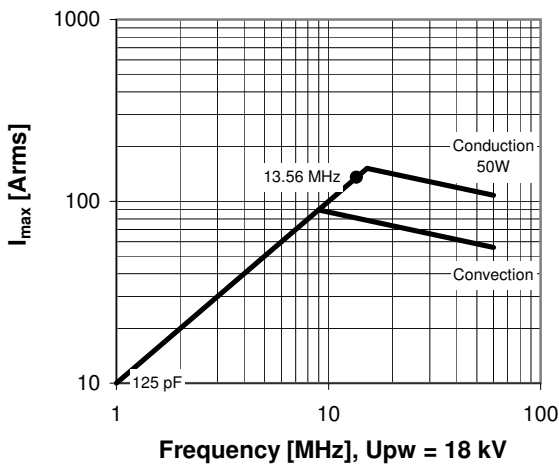
## CFMN-125DAC/30-AF-G

Old Type Designation: MC2C-125E

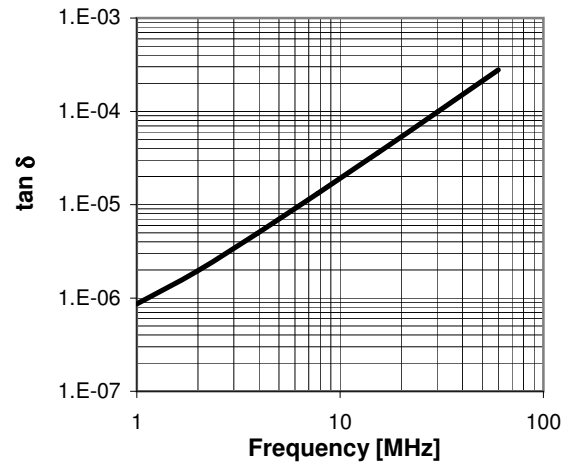
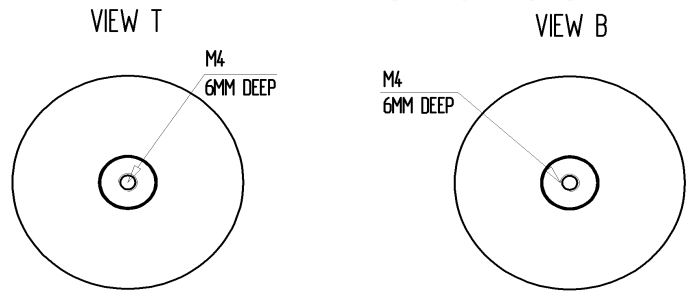
### Specifications

Capacity $C_{max}$ (nominal)	125 pF
Voltage (Peak Test $U_{pt}$ / Peak Working $U_{pw}$ )	30 kV / 18 kV
Capacity Tolerance	5%
Max. Current $I_{max}$ at 13.56 MHz with Conduction Cooling	135 Arms 50 W
Net Weight	0.55 kg

$I_{max}$  at 25°C ambient and 125°C surface temp. for convection and conduction (50 W) cooling



MOUNTING KITS 058-070 ENCLOSED



### Special Features:

Capacity Tolerance 5%