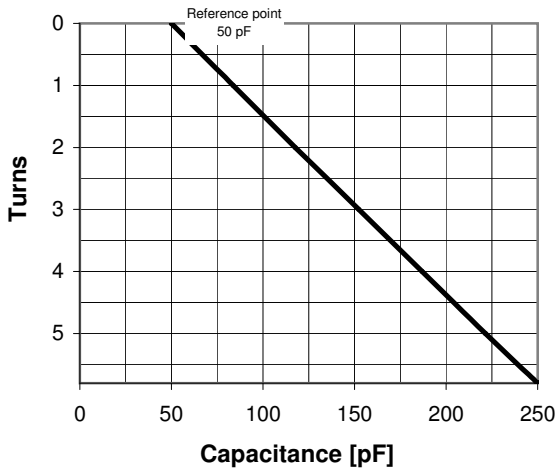
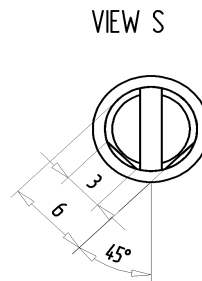
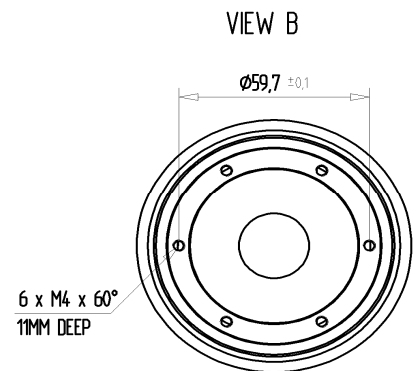
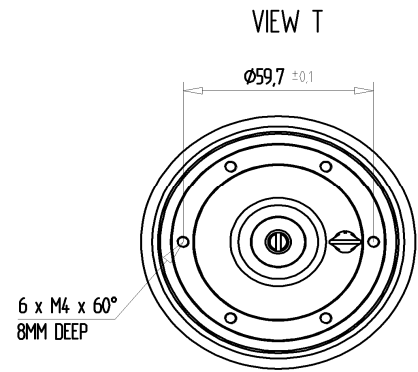


CVPO-250AC/5-BEAA

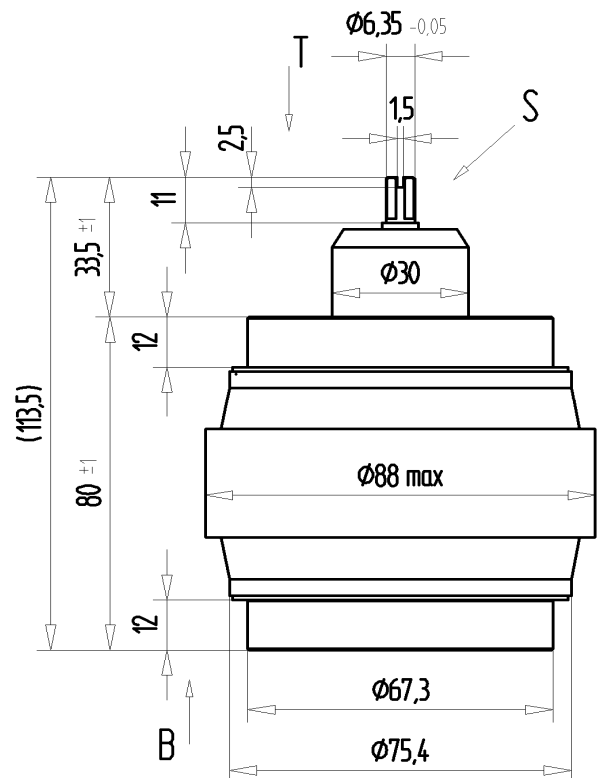
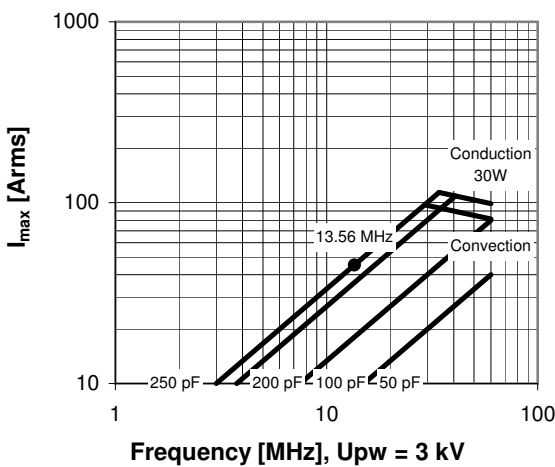
Old Type Designation: CV05C-250R

Specifications

| | |
|---|---------------|
| Capacity C_{max} (nominal) | 250 pF |
| Capacity C_{min} (nominal) | 50 pF |
| Voltage (Peak Test U_{pt} / Peak Working U_{pw}) | 5 kV / 3 kV |
| Capacity Tolerance (linear Range) | 10% |
| Max. Current I_{max} at 13.56 MHz with | 45 Arms |
| Conduction Cooling | 30 W |
| Self Inductance | ≤ 5 nH |
| Capacitance per turn | 34.5 pF/turn |
| Torque | ≤ 0.4 Nm |
| Net Weight | 1.2 kg |



I_{max} at 25°C ambient and 125°C surface temp. for convection and conduction (30 W) cooling



| Turns | Nominal Capacitance [pF] | Tolerance |
|-------|--------------------------|-----------|
| 0.0 | 50.0 | 0% |
| 1.0 | 83.7 | 10% |
| 2.0 | 117.7 | 10% |
| 3.0 | 152.3 | 10% |
| 4.0 | 186.9 | 10% |
| 5.0 | 221.5 | 10% |
| 5.8 | 250.0 | 10% |

Mechanical stop at < 50 pF at -6.7 +/-0.5 turns
Mechanical stop at > 250 pF at 6 +/-0.5 turns

Self inductance and resonance frequency

